

## Attachment 2

**CITY OF OCEANSIDE  
CONTRACT CHANGE ORDER**

**PROJECT TITLE: McNeil Street Improvements**

CHANGE ORDER No. 1  
 PROJECT No. CIP23-00025  
 DATE 02/09/2026  
 PURCHASE ORDER # 1007084

**This change order provides for:**

- The omission of Bid Item #28 - Slurry Seal.
- Additional work associated with the following items as shown in the tables below:
  - Additional cost associated with a 3" grind and overlay instead of a slurry seal on the existing eastern portion of McNeil Street.
  - Potholing and additional traffic control linked to the 3" grind and overlay.
  - Preservation of seven (7) additional monuments within the project limits.

**Cost of Change:** In accordance with Section 7.21.4 CHANGE IN CONTRACT PRICE of the General Provisions, this Change Order compensates RAC Construction & Engineering, Inc. as follows:

Item #	Description of Work to be Omitted	Unit	Quantity	Unit Price	Extended Amount
28	Slurry Seal	SF	-14,800	\$1.50	(\$22,200.00)

Item #	Description of Work to be Added	Unit	Quantity	Unit Price	Extended Amount
N/A	3" Grind and Overlay	LS	1	\$120,220.20	\$120,220.20
N/A	Potholing for existing Fiber Optic line	LS	1	\$8,970.00	\$8,970.00
2	Traffic Control	LS	1	\$8,780.00	\$8,780.00
31	Reset Survey Monuments	EA	7	\$1,740.00	\$12,180.00


Cost: Increase \$127,950.20    Decrease N/A    No Change N/A

Upon careful consideration of the work specified by this change order, the contractor agrees to provide all equipment and labor, to furnish the materials except as otherwise noted above, and will accept the prices shown above as full payment to perform the services necessary to complete the work in place.

**Contract Time Adjustment:**

By reason of this order the time of completion will be adjusted as follows: 4 additional day(s). The CONTRACTOR agrees no damage or loss will be incurred due to this time revision granted in accordance with Section 7.21.1 of the Contract Document.

**Contract Summary:**

Recommended by:   
Luis Cardenas, Project Manager  
CITY OF OCEANSIDE


Initial Contract Amount	\$	<u>766,351.00</u>	(100.0%)
Council Approved CCOs (n/a)	\$	<u>200,000.00</u>	(+26.10%)
Council Approved Contract Amt.:	\$	<u>966,351.00</u>	(126.10%)
Change Order No(s). (n/a)	\$	<u>0.00</u>	(+0.00%)
This Change Order No. (1)	\$	<u>127,950.20</u>	(+16.70%)
Contract Amount To Date:	\$	<u>894,301.20</u>	(116.70%)

Accepted:  2/11/26  
Ruben Claudio, President & Owner  
RAC Engineering & Construction, Inc.

Approved By:

**City Engineer Authority (Section 5.1.3)**

City Council Action Required	<u>X</u>	<u>        </u>	<u>10/01/2025</u>
	Yes	No	Council Date
Additional Appropriation Required	<u>        </u>	<u>X</u>	
	Yes	No	

  
Brian K. Thomas, City Engineer  
CITY OF OCEANSIDE

Original to: City Clerk, Contractor  
Copies to: Accounts Payable, File



5811 Barbarossa Ct., San Diego, CA 92115 - (760) 497-6668 - rclaudio@racconstruction.biz  
 DBE #51009 DGS SBE #2027349 PSWMSDC MBE #AZ17581 CPUC MBE #22000146  
 CSLB License #A/B 1073141 DIR #1000855111

<b>To:</b> City Of Oceanside	<b>Contact:</b> Luis Cardenas
<b>Address:</b> 300 North Coast Highway Oceanside, CA 92054 USA	<b>Phone:</b>
	<b>Fax:</b>
<b>CO Name:</b> Grind/Pave	<b>CO ID:</b> CCO #001 - Additional Grind/Pave
<b>Project Name:</b> McNeil Street Improvements Project	<b>CO Date:</b> 1/28/2026
<b>Project Location:</b> McNeil Street In Oceanside, CA	

Item #	Item Description	Estimated Quantity	Unit	Unit Price	Total Price
001	3" Grind	19,548.00	SF	\$1.05	\$20,525.40
002	3" Pave	19,548.00	SF	\$5.10	\$99,694.80
003	Pothole Fiber Optic	1.00	LS	\$8,970.00	\$8,970.00
004	Traffic Control	4.00	WDAY	\$2,195.00	\$8,780.00
				<b>Bid Price Subtotal:</b>	<b>\$137,970.20</b>
				<b>Total Bid Price:</b>	<b>\$137,970.20</b>

**Notes:**

- Pricing in this proposal is valid for 30 days. We reserve the right to revise or withdraw this proposal if pricing is not accepted within 15 days of receipt

**Payment Terms:**

**TERMS AND CONDITIONS**

- NET 30 Days from receipt of invoice from RAC Construction & Engineering, Inc.
- Pricing based upon verbal request/direction provided by the City of Oceanside per jobsite walk
- Monthly progress payments and full payment upon completion
- All quantities are estimates, quantities in addition to limits per plan will be additional
- All work shall be performed during the normal business hours of 7:00 AM to 5:00 PM Local Time. Work outside of these hours shall be subject to additional charges.

**•INCLUSIONS**

- Pricing based upon 1 mobilization(s), \$5,000/mob for each additional mobilization

**•EXCLUSIONS**

- ALL QA/QC
- Bonds/Permits/Fees/Design
- Survey
- Relocation of existing facilities, utilities, and/or appurtenances
- Differing site conditions/Unforeseen conditions, e.g. buried obstructions, unidentified utilities, etc.
- Night Work

**ACCEPTED:**

The above prices, specifications and conditions are satisfactory and hereby accepted.

**Buyer:** \_\_\_\_\_

**Signature:** \_\_\_\_\_

**Date of Acceptance:** \_\_\_\_\_

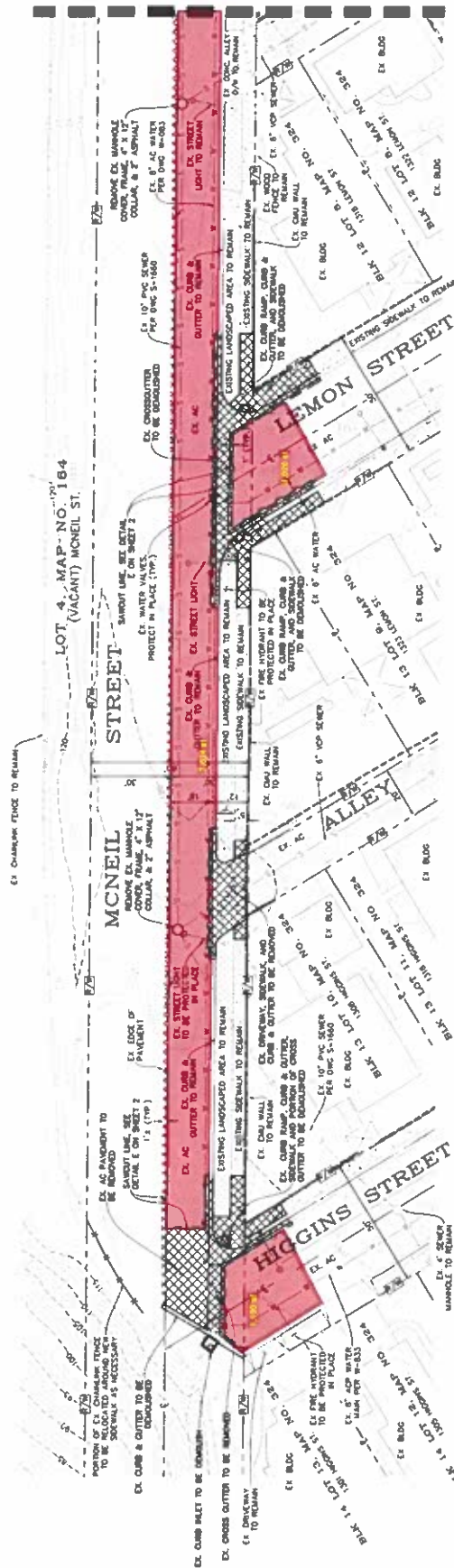
**CONFIRMED:**

**RAC Construction & Engineering, Inc.**

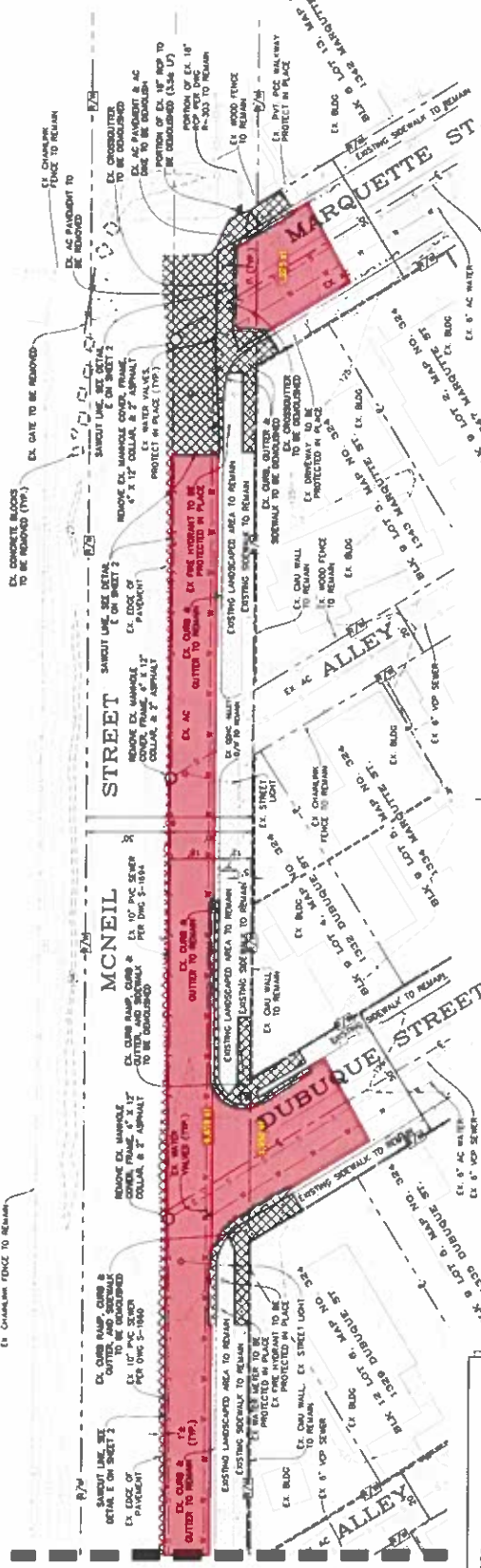
**Authorized Signature:** \_\_\_\_\_

**Estimator:** David Shaw  
(619) 454-2484 estimating@racconstruction.biz

MATCHLINE (STA 15+10.00) - SEE BOTTOM LEFT



MATCHLINE (STA 15+10.00) - SEE TOP RIGHT



**DEMOLITION NOTES:**

1. DEMOLITION SHALL BE IN ACCORDANCE WITH THE CITY ENGINEER'S SPECIFICATIONS AND THE CITY ENGINEER'S APPROVED DEMOLITION PLAN.
2. DEMOLITION SHALL BE IN ACCORDANCE WITH THE CITY ENGINEER'S APPROVED DEMOLITION PLAN AND THE CITY ENGINEER'S APPROVED DEMOLITION PLAN.
3. SEE SHEET 2 FOR ADDITIONAL DEMOLITION NOTES.

**NOTE TO CONTRACTOR:**

CONTRACTOR AGREES THAT THEY SHALL ASSUME SOLE AND COMPLETE RESPONSIBILITY FOR THE PROTECTION OF ALL EXISTING UTILITIES, STRUCTURES, AND LANDSCAPE DURING THE COURSE OF DEMOLITION. CONTRACTOR SHALL OBTAIN ALL NECESSARY PERMITS AND HOLD THE OWNER AND THE ENGINEER HARMLESS FROM ANY AND ALL LIABILITY, REAL OR PERSONAL, ARISING FROM THE USE OF THIS PROJECT, EXCEPTING THE LIABILITY ARISING FROM THE SOLE NEGLIGENCE OF THE OWNER OF THE PROPERTY.

**DEMOLITION LEGEND**

ITEM	SYMBOL	QUANTITY
AC PAVEMENT	[Symbol]	3850 SF
CURB & GUTTER	[Symbol]	510 LF
SEWER & CURB RAMP	[Symbol]	1 EA
CONCRETE	[Symbol]	875 SF
CROSS GUTTER	[Symbol]	65 LF
CHAIN LINK FENCE	[Symbol]	5 EA
MANHOLE COVER & FRAME	[Symbol]	3 EA
8" RCP STORMDRAIN	[Symbol]	1 EA
CURB RAIL	[Symbol]	1 EA

**APPROVED REVISIONS**

NO.	DATE	DESCRIPTION

**CITY BENCHMARK**

DATE: 11/15/2011  
 TIME: 10:00 AM  
 BY: [Signature]  
 TITLE: [Title]

**CONTRACTOR RESPONSIBILITY FOR PRECONSTRUCTION DOCUMENTATION AND RESTORATION**

THE CONTRACTOR SHALL BE RESPONSIBLE FOR THE PROTECTION OF ALL EXISTING UTILITIES, STRUCTURES, AND LANDSCAPE DURING THE COURSE OF DEMOLITION. CONTRACTOR SHALL OBTAIN ALL NECESSARY PERMITS AND HOLD THE OWNER AND THE ENGINEER HARMLESS FROM ANY AND ALL LIABILITY, REAL OR PERSONAL, ARISING FROM THE USE OF THIS PROJECT, EXCEPTING THE LIABILITY ARISING FROM THE SOLE NEGLIGENCE OF THE OWNER OF THE PROPERTY.

**REVISIONS**

NO.	DATE	DESCRIPTION

WID NO. N/A FILE NO. DPT-15-0003

REVISION PLAN FOR  
**MCNEIL STREET ROAD WIDENING**  
 BETWEEN HIGGINS ST. AND MARQUETTE ST.

DESIGNED BY: [Signature]  
 CHECKED BY: [Signature]  
 DATE: 11/15/2011

PROJECT NO. 15-0003



REC CONSULTANTS, INC.  
 415 COMMERCE BLVD., SUITE 200  
 IOWA CITY, IOWA 52242  
 (515) 241-1000

**CITY OF OCEANSIDE  
CONTRACT CHANGE ORDER**

**PROJECT TITLE: McNeil Street Improvements**

CHANGE ORDER No.	<u>2</u>
PROJECT No.	<u>CIP23-00025</u>
DATE	<u>04/20/2026</u>
PURCHASE ORDER #	<u>1007084</u>

**This change order provides for:**

- The following items were omitted or reduced as part of the project scope of work. The original quantity for each respective Bid Item will be omitted or reduced as shown in the tables below:
  - Omission of the manhole collar, frame, & cover and the edge grind & overlay (Bid Items #21, #23).
  - Reduction of removal of existing curb & gutter, class II base, and the install of curb & gutter, driveway and sidewalk (Bid Items #8, #13, #14, #17, #20).
  
- Additional cost associated with the following items as shown in the table below:
  - Sawcut, removal and disposal of existing AC pavement (Bid Item #6) at the north end of the project site that was not called out on the project plans.
  - Removal and disposal of existing sidewalk, curb ramps, cross gutters, & driveway (Bid Item #7).
  - Unclassified excavation as a result of yielding subgrade soil on the eastern half of McNeil Street (Bid Item #10).
  - Concrete cross gutter due to expanding the limits of the surface (Bid Item #18).
  - AC pavement and chain link fence overages in quantity due to field conditions (Bid Items #24, #25).
  - Demolish existing non-standard curb inlet box at the south end of McNeil Street.

**Cost of Change:** In accordance with Section 7.21.4 CHANGE IN CONTRACT PRICE of the General Provisions, this Change Order compensates RAC Construction & Engineering, Inc. as follows:

Item #	Description of Work to be Omitted	Unit	Quantity	Unit Price	Extended Amount
23	2"x1' Wide Edge Grind & Overlay	SF	-580	\$9.00	-\$5,220.00

Item #	Description of Work to be Reduced	Unit	Quantity	Unit Price	Extended Amount
8	Remove & Dispose of Existing Curb & Gutter	LF	-31	\$16.00	-\$496.00
14	Concrete Curb & Gutter	LF	-179.08	\$54.00	-\$9,670.32
17	Concrete Driveway	SF	-63.17	\$18.00	-\$1,137.06
20	Concrete Sidewalk (4")	SF	-1,490.06	\$10.00	-\$14,900.60
21	Replace Existing Manhole Collar, Frame, & Cover	EA	-1.85	\$1,295.00	-\$2,395.75

Item #	Description of Work to be Added	Unit	Quantity	Unit Price	Extended Amount
6	Sawcut, Remove & Dispose of Existing AC Pavement & Base	SF	793	\$5.50	\$4,361.50
7	Remove & Dispose of Existing PCC Sidewalk, Curb Ramps, Cross Gutters, & Driveway	SF	918	\$5.00	\$4,590.00
10	Unclassified Excavation	CY	221.15	\$205.00	\$45,335.75
13	Class II Aggregate Base (6")	CY	10.15	\$163.00	\$1,654.45
18	Concrete Cross Gutter	SF	189.94	\$19.50	\$3,703.83
24	AC Pavement (3")	TON	16.92	\$214.00	\$3,620.88
25	Chain Link Fence	LF	39	\$137.00	\$5,343.00
N/A	Demolish Non-Standard Existing Curb Inlet Box	LS	1	\$512.63	\$512.63

Cost: Increase \$35,302.31 Decrease N/A No Change N/A

Upon careful consideration of the work specified by this change order, the contractor agrees to provide all equipment and labor, to furnish the materials except as otherwise noted above, and will accept the prices shown above as full payment to perform the services necessary to complete the work in place.

**Contract Time Adjustment:**

By reason of this order the time of completion will be adjusted as follows: 0 additional day(s). The CONTRACTOR agrees no damage or loss will be incurred due to this time revision granted in accordance with Section 7.21.1 of the Contract Document.

**Contract Summary:**

Recommended by:


  
 Luis Cardenas, Project Manager  
 CITY OF OCEANSIDE

Accepted:

  
 Ruben Claudio, President & Owner  
 RAC Engineering & Construction, Inc.

Initial Contract Amount	\$	<u>766,351.00</u>	(100.0%)
Council Approved CCOs (n/a)	\$	<u>200,000.00</u>	(+26.10%)
Council Approved Contract Amt.:	\$	<u>966,351.00</u>	(126.10%)
Change Order No(s). (1)	\$	<u>127,950.20</u>	(+16.70%)
This Change Order No. (2)	\$	<u>35,302.31</u>	(+4.60%)
Contract Amount To Date:	\$	<u>929,603.51</u>	(21.30%)

Approved By:

  
 Brian K. Thomas, City Engineer  
 CITY OF OCEANSIDE

City Engineer Authority (Section 5.1.3)

City Council Action Required X No 10/01/2025  
 Yes No Council Date

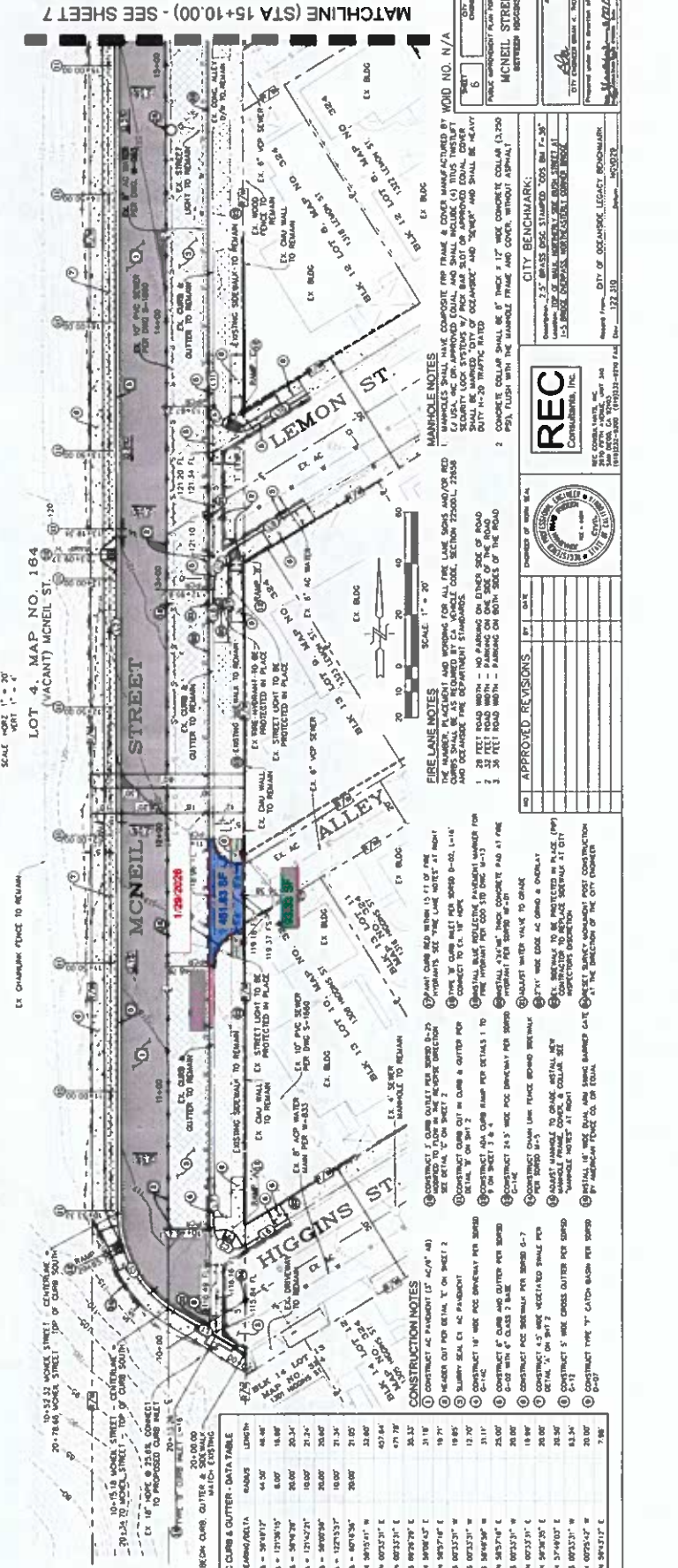
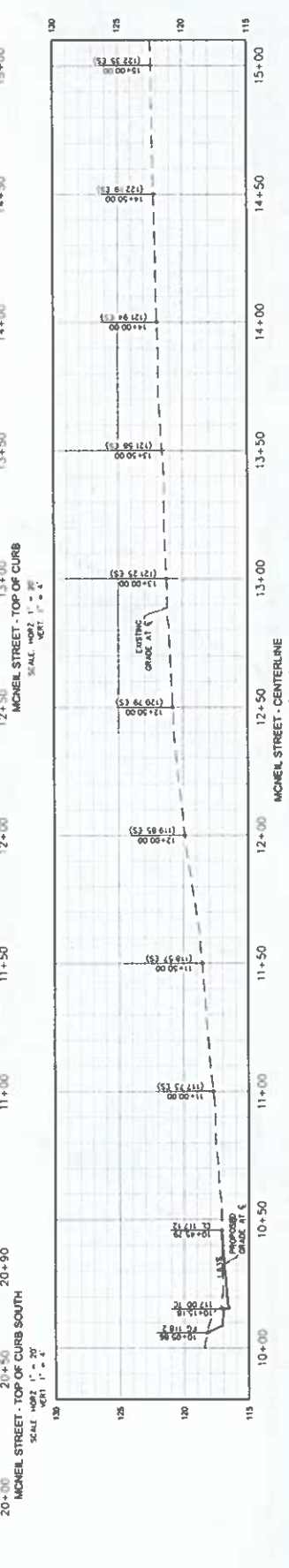
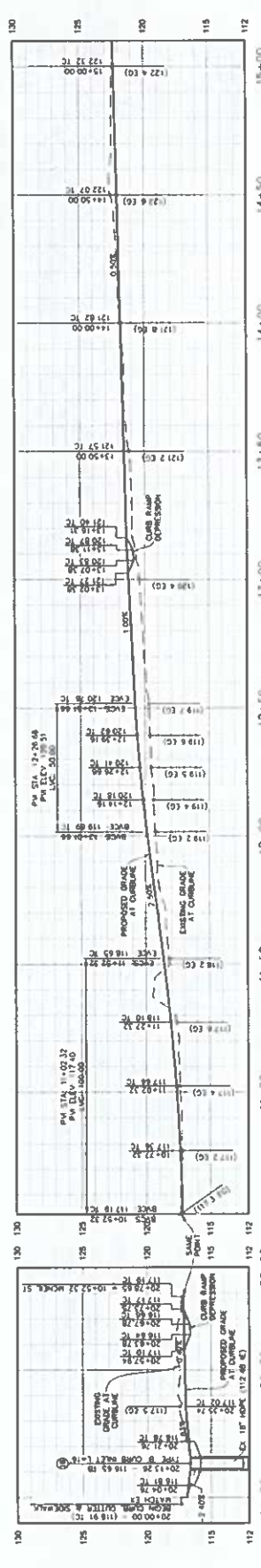
Additional Appropriation Required X  
 Yes No

Original to: City Clerk, Contractor  
 Copies to: Accounts Payable, File









NO.	DESCRIPTION	LENGTH	AREA
1	POC CURB & GUTTER - DATA TABLE	44.50'	48.48'
2	A - 12" x 18" x 12"	18.00'	18.00'
3	A - 12" x 18" x 12"	20.34'	20.34'
4	A - 12" x 18" x 12"	10.00'	10.00'
5	A - 12" x 18" x 12"	20.00'	20.00'
6	A - 12" x 18" x 12"	10.00'	10.00'
7	A - 12" x 18" x 12"	21.00'	21.00'
8	A - 12" x 18" x 12"	33.00'	33.00'
9	A - 12" x 18" x 12"	67.84'	67.84'
10	A - 12" x 18" x 12"	67.78'	67.78'
11	A - 12" x 18" x 12"	35.33'	35.33'
12	A - 12" x 18" x 12"	31.16'	31.16'
13	A - 12" x 18" x 12"	19.71'	19.71'
14	A - 12" x 18" x 12"	19.85'	19.85'
15	A - 12" x 18" x 12"	12.00'	12.00'
16	A - 12" x 18" x 12"	31.11'	31.11'
17	A - 12" x 18" x 12"	25.00'	25.00'
18	A - 12" x 18" x 12"	20.00'	20.00'
19	A - 12" x 18" x 12"	18.89'	18.89'
20	A - 12" x 18" x 12"	20.00'	20.00'
21	A - 12" x 18" x 12"	20.00'	20.00'
22	A - 12" x 18" x 12"	20.00'	20.00'
23	A - 12" x 18" x 12"	20.00'	20.00'
24	A - 12" x 18" x 12"	20.00'	20.00'
25	A - 12" x 18" x 12"	20.00'	20.00'
26	A - 12" x 18" x 12"	20.00'	20.00'
27	A - 12" x 18" x 12"	20.00'	20.00'
28	A - 12" x 18" x 12"	20.00'	20.00'
29	A - 12" x 18" x 12"	20.00'	20.00'
30	A - 12" x 18" x 12"	20.00'	20.00'
31	A - 12" x 18" x 12"	20.00'	20.00'
32	A - 12" x 18" x 12"	20.00'	20.00'
33	A - 12" x 18" x 12"	20.00'	20.00'
34	A - 12" x 18" x 12"	20.00'	20.00'
35	A - 12" x 18" x 12"	20.00'	20.00'
36	A - 12" x 18" x 12"	20.00'	20.00'
37	A - 12" x 18" x 12"	20.00'	20.00'
38	A - 12" x 18" x 12"	20.00'	20.00'
39	A - 12" x 18" x 12"	20.00'	20.00'
40	A - 12" x 18" x 12"	20.00'	20.00'
41	A - 12" x 18" x 12"	20.00'	20.00'
42	A - 12" x 18" x 12"	20.00'	20.00'
43	A - 12" x 18" x 12"	20.00'	20.00'
44	A - 12" x 18" x 12"	20.00'	20.00'
45	A - 12" x 18" x 12"	20.00'	20.00'
46	A - 12" x 18" x 12"	20.00'	20.00'
47	A - 12" x 18" x 12"	20.00'	20.00'
48	A - 12" x 18" x 12"	20.00'	20.00'
49	A - 12" x 18" x 12"	20.00'	20.00'
50	A - 12" x 18" x 12"	20.00'	20.00'
51	A - 12" x 18" x 12"	20.00'	20.00'
52	A - 12" x 18" x 12"	20.00'	20.00'
53	A - 12" x 18" x 12"	20.00'	20.00'
54	A - 12" x 18" x 12"	20.00'	20.00'
55	A - 12" x 18" x 12"	20.00'	20.00'
56	A - 12" x 18" x 12"	20.00'	20.00'
57	A - 12" x 18" x 12"	20.00'	20.00'
58	A - 12" x 18" x 12"	20.00'	20.00'
59	A - 12" x 18" x 12"	20.00'	20.00'
60	A - 12" x 18" x 12"	20.00'	20.00'
61	A - 12" x 18" x 12"	20.00'	20.00'
62	A - 12" x 18" x 12"	20.00'	20.00'
63	A - 12" x 18" x 12"	20.00'	20.00'
64	A - 12" x 18" x 12"	20.00'	20.00'
65	A - 12" x 18" x 12"	20.00'	20.00'
66	A - 12" x 18" x 12"	20.00'	20.00'
67	A - 12" x 18" x 12"	20.00'	20.00'
68	A - 12" x 18" x 12"	20.00'	20.00'
69	A - 12" x 18" x 12"	20.00'	20.00'
70	A - 12" x 18" x 12"	20.00'	20.00'
71	A - 12" x 18" x 12"	20.00'	20.00'
72	A - 12" x 18" x 12"	20.00'	20.00'
73	A - 12" x 18" x 12"	20.00'	20.00'
74	A - 12" x 18" x 12"	20.00'	20.00'
75	A - 12" x 18" x 12"	20.00'	20.00'
76	A - 12" x 18" x 12"	20.00'	20.00'
77	A - 12" x 18" x 12"	20.00'	20.00'
78	A - 12" x 18" x 12"	20.00'	20.00'
79	A - 12" x 18" x 12"	20.00'	20.00'
80	A - 12" x 18" x 12"	20.00'	20.00'
81	A - 12" x 18" x 12"	20.00'	20.00'
82	A - 12" x 18" x 12"	20.00'	20.00'
83	A - 12" x 18" x 12"	20.00'	20.00'
84	A - 12" x 18" x 12"	20.00'	20.00'
85	A - 12" x 18" x 12"	20.00'	20.00'
86	A - 12" x 18" x 12"	20.00'	20.00'
87	A - 12" x 18" x 12"	20.00'	20.00'
88	A - 12" x 18" x 12"	20.00'	20.00'
89	A - 12" x 18" x 12"	20.00'	20.00'
90	A - 12" x 18" x 12"	20.00'	20.00'
91	A - 12" x 18" x 12"	20.00'	20.00'
92	A - 12" x 18" x 12"	20.00'	20.00'
93	A - 12" x 18" x 12"	20.00'	20.00'
94	A - 12" x 18" x 12"	20.00'	20.00'
95	A - 12" x 18" x 12"	20.00'	20.00'
96	A - 12" x 18" x 12"	20.00'	20.00'
97	A - 12" x 18" x 12"	20.00'	20.00'
98	A - 12" x 18" x 12"	20.00'	20.00'
99	A - 12" x 18" x 12"	20.00'	20.00'
100	A - 12" x 18" x 12"	20.00'	20.00'
101	A - 12" x 18" x 12"	20.00'	20.00'
102	A - 12" x 18" x 12"	20.00'	20.00'
103	A - 12" x 18" x 12"	20.00'	20.00'
104	A - 12" x 18" x 12"	20.00'	20.00'
105	A - 12" x 18" x 12"	20.00'	20.00'
106	A - 12" x 18" x 12"	20.00'	20.00'
107	A - 12" x 18" x 12"	20.00'	20.00'
108	A - 12" x 18" x 12"	20.00'	20.00'
109	A - 12" x 18" x 12"	20.00'	20.00'
110	A - 12" x 18" x 12"	20.00'	20.00'
111	A - 12" x 18" x 12"	20.00'	20.00'
112	A - 12" x 18" x 12"	20.00'	20.00'
113	A - 12" x 18" x 12"	20.00'	20.00'
114	A - 12" x 18" x 12"	20.00'	20.00'
115	A - 12" x 18" x 12"	20.00'	20.00'
116	A - 12" x 18" x 12"	20.00'	20.00'
117	A - 12" x 18" x 12"	20.00'	20.00'

CONSTRUCTION NOTES: 1. CONSTRUCT 24" CONC. CURB AND GUTTER PER SPREAD 1-1 TO 1-2 PER DETAIL 1 ON SHEET 1 TO 1-2 PER DETAIL 1 ON SHEET 2. 2. CONSTRUCT 18" CONC. CURB AND GUTTER PER SPREAD 2-1 TO 2-2 PER DETAIL 2 ON SHEET 1 TO 2-2 PER DETAIL 2 ON SHEET 2. 3. CONSTRUCT 12" CONC. CURB AND GUTTER PER SPREAD 3-1 TO 3-2 PER DETAIL 3 ON SHEET 1 TO 3-2 PER DETAIL 3 ON SHEET 2. 4. CONSTRUCT 6" CONC. CURB AND GUTTER PER SPREAD 4-1 TO 4-2 PER DETAIL 4 ON SHEET 1 TO 4-2 PER DETAIL 4 ON SHEET 2. 5. CONSTRUCT 3" CONC. CURB AND GUTTER PER SPREAD 5-1 TO 5-2 PER DETAIL 5 ON SHEET 1 TO 5-2 PER DETAIL 5 ON SHEET 2. 6. CONSTRUCT 1.5" CONC. CURB AND GUTTER PER SPREAD 6-1 TO 6-2 PER DETAIL 6 ON SHEET 1 TO 6-2 PER DETAIL 6 ON SHEET 2. 7. CONSTRUCT 0.75" CONC. CURB AND GUTTER PER SPREAD 7-1 TO 7-2 PER DETAIL 7 ON SHEET 1 TO 7-2 PER DETAIL 7 ON SHEET 2. 8. CONSTRUCT 0.375" CONC. CURB AND GUTTER PER SPREAD 8-1 TO 8-2 PER DETAIL 8 ON SHEET 1 TO 8-2 PER DETAIL 8 ON SHEET 2. 9. CONSTRUCT 0.1875" CONC. CURB AND GUTTER PER SPREAD 9-1 TO 9-2 PER DETAIL 9 ON SHEET 1 TO 9-2 PER DETAIL 9 ON SHEET 2. 10. CONSTRUCT 0.09375" CONC. CURB AND GUTTER PER SPREAD 10-1 TO 10-2 PER DETAIL 10 ON SHEET 1 TO 10-2 PER DETAIL 10 ON SHEET 2. 11. CONSTRUCT 0.046875" CONC. CURB AND GUTTER PER SPREAD 11-1 TO 11-2 PER DETAIL 11 ON SHEET 1 TO 11-2 PER DETAIL 11 ON SHEET 2. 12. CONSTRUCT 0.0234375" CONC. CURB AND GUTTER PER SPREAD 12-1 TO 12-2 PER DETAIL 12 ON SHEET 1 TO 12-2 PER DETAIL 12 ON SHEET 2. 13. CONSTRUCT 0.01171875" CONC. CURB AND GUTTER PER SPREAD 13-1 TO 13-2 PER DETAIL 13 ON SHEET 1 TO 13-2 PER DETAIL 13 ON SHEET 2. 14. CONSTRUCT 0.005859375" CONC. CURB AND GUTTER PER SPREAD 14-1 TO 14-2 PER DETAIL 14 ON SHEET 1 TO 14-2 PER DETAIL 14 ON SHEET 2. 15. CONSTRUCT 0.0029296875" CONC. CURB AND GUTTER PER SPREAD 15-1 TO 15-2 PER DETAIL 15 ON SHEET 1 TO 15-2 PER DETAIL 15 ON SHEET 2. 16. CONSTRUCT 0.00146484375" CONC. CURB AND GUTTER PER SPREAD 16-1 TO 16-2 PER DETAIL 16 ON SHEET 1 TO 16-2 PER DETAIL 16 ON SHEET 2. 17. CONSTRUCT 0.000732421875" CONC. CURB AND GUTTER PER SPREAD 17-1 TO 17-2 PER DETAIL 17 ON SHEET 1 TO 17-2 PER DETAIL 17 ON SHEET 2. 18. CONSTRUCT 0.0003662109375" CONC. CURB AND GUTTER PER SPREAD 18-1 TO 18-2 PER DETAIL 18 ON SHEET 1 TO 18-2 PER DETAIL 18 ON SHEET 2. 19. CONSTRUCT 0.00018310546875" CONC. CURB AND GUTTER PER SPREAD 19-1 TO 19-2 PER DETAIL 19 ON SHEET 1 TO 19-2 PER DETAIL 19 ON SHEET 2. 20. CONSTRUCT 0.000091552734375" CONC. CURB AND GUTTER PER SPREAD 20-1 TO 20-2 PER DETAIL 20 ON SHEET 1 TO 20-2 PER DETAIL 20 ON SHEET 2. 21. CONSTRUCT 0.0000457763671875" CONC. CURB AND GUTTER PER SPREAD 21-1 TO 21-2 PER DETAIL 21 ON SHEET 1 TO 21-2 PER DETAIL 21 ON SHEET 2. 22. CONSTRUCT 0.00002288818359375" CONC. CURB AND GUTTER PER SPREAD 22-1 TO 22-2 PER DETAIL 22 ON SHEET 1 TO 22-2 PER DETAIL 22 ON SHEET 2. 23. CONSTRUCT 0.000011444091796875" CONC. CURB AND GUTTER PER SPREAD 23-1 TO 23-2 PER DETAIL 23 ON SHEET 1 TO 23-2 PER DETAIL 23 ON SHEET 2. 24. CONSTRUCT 0.0000057220458984375" CONC. CURB AND GUTTER PER SPREAD 24-1 TO 24-2 PER DETAIL 24 ON SHEET 1 TO 24-2 PER DETAIL 24 ON SHEET 2. 25. CONSTRUCT 0.00000286102294921875" CONC. CURB AND GUTTER PER SPREAD 25-1 TO 25-2 PER DETAIL 25 ON SHEET 1 TO 25-2 PER DETAIL 25 ON SHEET 2. 26. CONSTRUCT 0.000001430511474609375" CONC. CURB AND GUTTER PER SPREAD 26-1 TO 26-2 PER DETAIL 26 ON SHEET 1 TO 26-2 PER DETAIL 26 ON SHEET 2. 27. CONSTRUCT 0.0000007152557373046875" CONC. CURB AND GUTTER PER SPREAD 27-1 TO 27-2 PER DETAIL 27 ON SHEET 1 TO 27-2 PER DETAIL 27 ON SHEET 2. 28. CONSTRUCT 0.00000035762786865234375" CONC. CURB AND GUTTER PER SPREAD 28-1 TO 28-2 PER DETAIL 28 ON SHEET 1 TO 28-2 PER DETAIL 28 ON SHEET 2. 29. CONSTRUCT 0.000000178813934326171875" CONC. CURB AND GUTTER PER SPREAD 29-1 TO 29-2 PER DETAIL 29 ON SHEET 1 TO 29-2 PER DETAIL 29 ON SHEET 2. 30. CONSTRUCT 0.0000000894069671630859375" CONC. CURB AND GUTTER PER SPREAD 30-1 TO 30-2 PER DETAIL 30 ON SHEET 1 TO 30-2 PER DETAIL 30 ON SHEET 2. 31. CONSTRUCT 0.00000004470348358154296875" CONC. CURB AND GUTTER PER SPREAD 31-1 TO 31-2 PER DETAIL 31 ON SHEET 1 TO 31-2 PER DETAIL 31 ON SHEET 2. 32. CONSTRUCT 0.00000002235174179077146484375" CONC. CURB AND GUTTER PER SPREAD 32-1 TO 32-2 PER DETAIL 32 ON SHEET 1 TO 32-2 PER DETAIL 32 ON SHEET 2. 33. CONSTRUCT 0.0000000111758708953857321875" CONC. CURB AND GUTTER PER SPREAD 33-1 TO 33-2 PER DETAIL 33 ON SHEET 1 TO 33-2 PER DETAIL 33 ON SHEET 2. 34. CONSTRUCT 0.0000000055879354476928659375" CONC. CURB AND GUTTER PER SPREAD 34-1 TO 34-2 PER DETAIL 34 ON SHEET 1 TO 34-2 PER DETAIL 34 ON SHEET 2. 35. CONSTRUCT 0.00000000279396772384643296875" CONC. CURB AND GUTTER PER SPREAD 35-1 TO 35-2 PER DETAIL 35 ON SHEET 1 TO 35-2 PER DETAIL 35 ON SHEET 2. 36. CONSTRUCT 0.000000001396983861923216484375" CONC. CURB AND GUTTER PER SPREAD 36-1 TO 36-2 PER DETAIL 36 ON SHEET 1 TO 36-2 PER DETAIL 36 ON SHEET 2. 37. CONSTRUCT 0.0000000006984919309616232421875" CONC. CURB AND GUTTER PER SPREAD 37-1 TO 37-2 PER DETAIL 37 ON SHEET 1 TO 37-2 PER DETAIL 37 ON SHEET 2. 38. CONSTRUCT 0.00000000034924596548081162109375" CONC. CURB AND GUTTER PER SPREAD 38-1 TO 38-2 PER DETAIL 38 ON SHEET 1 TO 38-2 PER DETAIL 38 ON SHEET 2. 39. CONSTRUCT 0.000000000174622982740405580546875" CONC. CURB AND GUTTER PER SPREAD 39-1 TO 39-2 PER DETAIL 39 ON SHEET 1 TO 39-2 PER DETAIL 39 ON SHEET 2. 40. CONSTRUCT 0.0000000000873114913702027902734375" CONC. CURB AND GUTTER PER SPREAD 40-1 TO 40-2 PER DETAIL 40 ON SHEET 1 TO 40-2 PER DETAIL 40 ON SHEET 2. 41. CONSTRUCT 0.00000000004365574568510139514671875" CONC. CURB AND GUTTER PER SPREAD 41-1 TO 41-2 PER DETAIL 41 ON SHEET 1 TO 41-2 PER DETAIL 41 ON SHEET 2. 42. CONSTRUCT 0.0000000000218278728425506975884375" CONC. CURB AND GUTTER PER SPREAD 42-1 TO 42-2 PER DETAIL 42 ON SHEET 1 TO 42-2 PER DETAIL 42 ON SHEET 2. 43. CONSTRUCT 0.00000000001091393642127534879421875" CONC. CURB AND GUTTER PER SPREAD 43-1 TO 43-2 PER DETAIL 43 ON SHEET 1 TO 43-2 PER DETAIL 43 ON SHEET 2. 44. CONSTRUCT 0.000000000005456968210637674397109375" CONC. CURB AND GUTTER PER SPREAD 44-1 TO 44-2 PER DETAIL 44 ON SHEET 1 TO 44-2 PER DETAIL 44 ON SHEET 2. 45. CONSTRUCT 0.0000000000027284841053188371985546875" CONC. CURB AND GUTTER PER SPREAD 45-1 TO 45-2 PER DETAIL 45 ON SHEET 1 TO 45-2 PER DETAIL 45 ON SHEET 2. 46. CONSTRUCT 0.000000000001364242052659419427734375" CONC. CURB AND GUTTER PER SPREAD 46-1 TO 46-2 PER DETAIL 46 ON SHEET 1 TO 46-2 PER DETAIL 46 ON SHEET 2. 47. CONSTRUCT 0.000000000000682121026329709713116921875" CONC. CURB AND GUTTER PER SPREAD 47-1 TO 47-2 PER DETAIL 47 ON SHEET 1 TO 47-2 PER DETAIL 47 ON SHEET 2. 48. CONSTRUCT 0.000000000000341060513164854745580546875" CONC. CURB AND GUTTER PER SPREAD 48-1 TO 48-2 PER DETAIL 48 ON SHEET 1 TO 48-2 PER DETAIL 48 ON SHEET 2. 49. CONSTRUCT 0.0000000000001705302565824273727902734375" CONC. CURB AND GUTTER PER SPREAD 49-1 TO 49-2 PER DETAIL 49 ON SHEET 1 TO 49-2 PER DETAIL 49 ON SHEET 2. 50. CONSTRUCT 0.00000000000008526512829121368689514671875" CONC. CURB AND GUTTER PER SPREAD 50-1 TO 50-2 PER DETAIL 50 ON SHEET 1 TO 50-2 PER DETAIL 50 ON SHEET 2. 51. CONSTRUCT 0.0000000000000426325641456568434397109375" CONC. CURB AND GUTTER PER SPREAD 51-1 TO 51-2 PER DETAIL 51 ON SHEET 1 TO 51-2 PER DETAIL 51 ON SHEET 2. 52. CONSTRUCT 0.00000000000002131628207282842173985546875" CONC. CURB AND GUTTER PER SPREAD 52-1 TO 52-2 PER DETAIL 52 ON SHEET 1 TO 52-2 PER DETAIL 52 ON SHEET 2. 53. CONSTRUCT 0.0000000000000106581410364141119427734375" CONC. CURB AND GUTTER PER SPREAD 53-1 TO 53-2 PER DETAIL 53 ON SHEET 1 TO 53-2 PER DETAIL 53 ON SHEET 2. 54. CONSTRUCT 0.0000000000000053290705182070559713116921875" CONC. CURB AND GUTTER PER SPREAD 54-1 TO 54-2 PER DETAIL 54 ON SHEET 1 TO 54-2 PER DETAIL 54 ON SHEET 2. 55. CONSTRUCT 0.0000000000000026645352591027779427734375" CONC. CURB AND GUTTER PER SPREAD 55-1 TO 55-2 PER DETAIL 55 ON SHEET 1 TO 55-2 PER DETAIL 55 ON SHEET 2. 56. CONSTRUCT 0.0000000000000013322676295513638689514671875" CONC. CURB AND GUTTER PER SPREAD 56-1 TO 56-2 PER DETAIL 56 ON SHEET 1 TO 56-2 PER DETAIL 56 ON SHEET 2. 57. CONSTRUCT 0.0000000000000006661338147756819427734375" CONC. CURB AND GUTTER PER SPREAD 57-1 TO 57-2 PER DETAIL 57 ON SHEET 1 TO 57-2 PER DETAIL 57 ON SHEET 2. 58. CONSTRUCT 0.0000000000000003330669073878409713116921875" CONC. CURB AND GUTTER PER SPREAD 58-1 TO 58-2 PER DETAIL 58 ON SHEET 1 TO 58-2 PER DETAIL 58 ON SHEET 2. 59. CONSTRUCT 0.0000000000000001665334536939204855580546875" CONC. CURB AND GUTTER PER SPREAD 59-1 TO 59-2 PER DETAIL 59 ON SHEET 1 TO 59-2 PER DETAIL 59 ON SHEET 2. 60. CONSTRUCT 0.0000000000000000832667268469602427734375" CONC. CURB AND GUTTER PER SPREAD 60-1 TO 60-2 PER DETAIL 60 ON SHEET 1 TO 60-2 PER DETAIL 60 ON SHEET 2. 61. CONSTRUCT 0.0000000000000000416333634234801213985546875" CONC. CURB AND GUTTER PER SPREAD 61-1 TO 61-2 PER DETAIL 61 ON SHEET 1 TO 61-2 PER DETAIL 61 ON SHEET 2. 62. CONSTRUCT 0.00000000000000002081668171174006069713116

**Bid Item #6 - Sawcut, Remove & Dispose of Existing AC Pavement & Base**



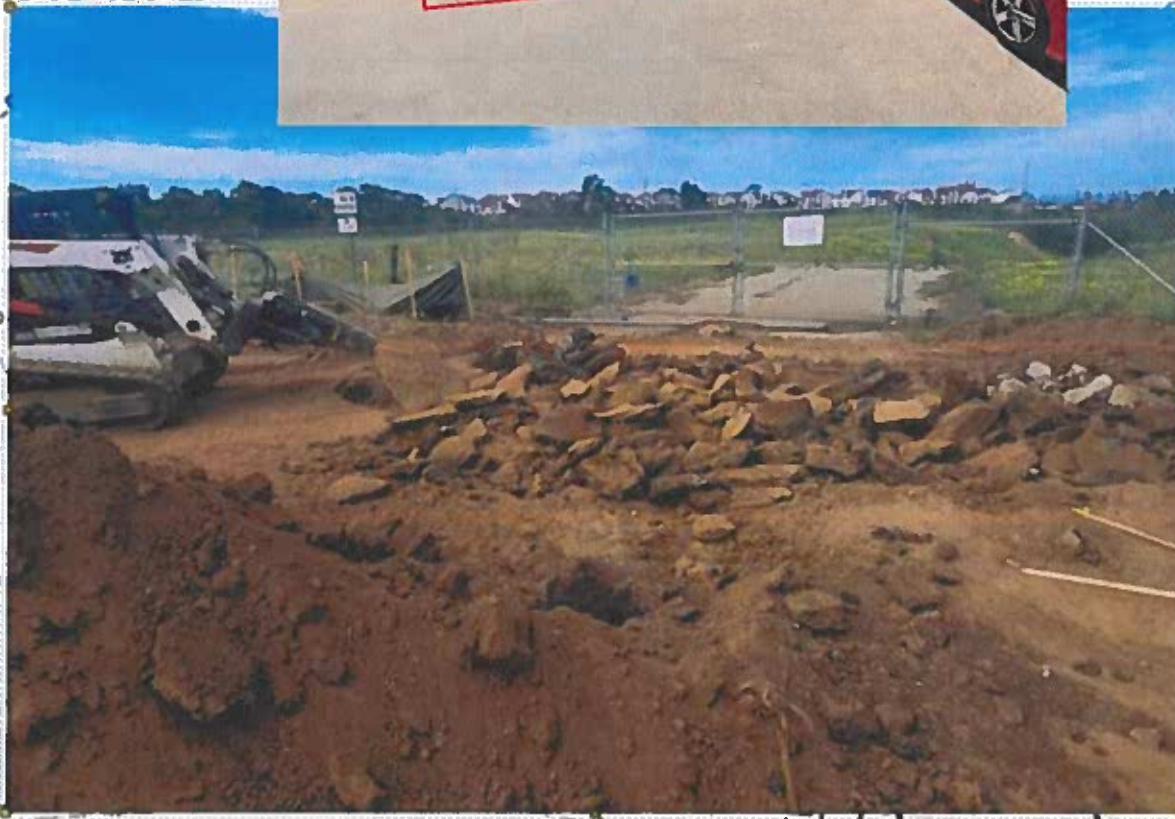
BE DEMOLISHED

TO REMAIN

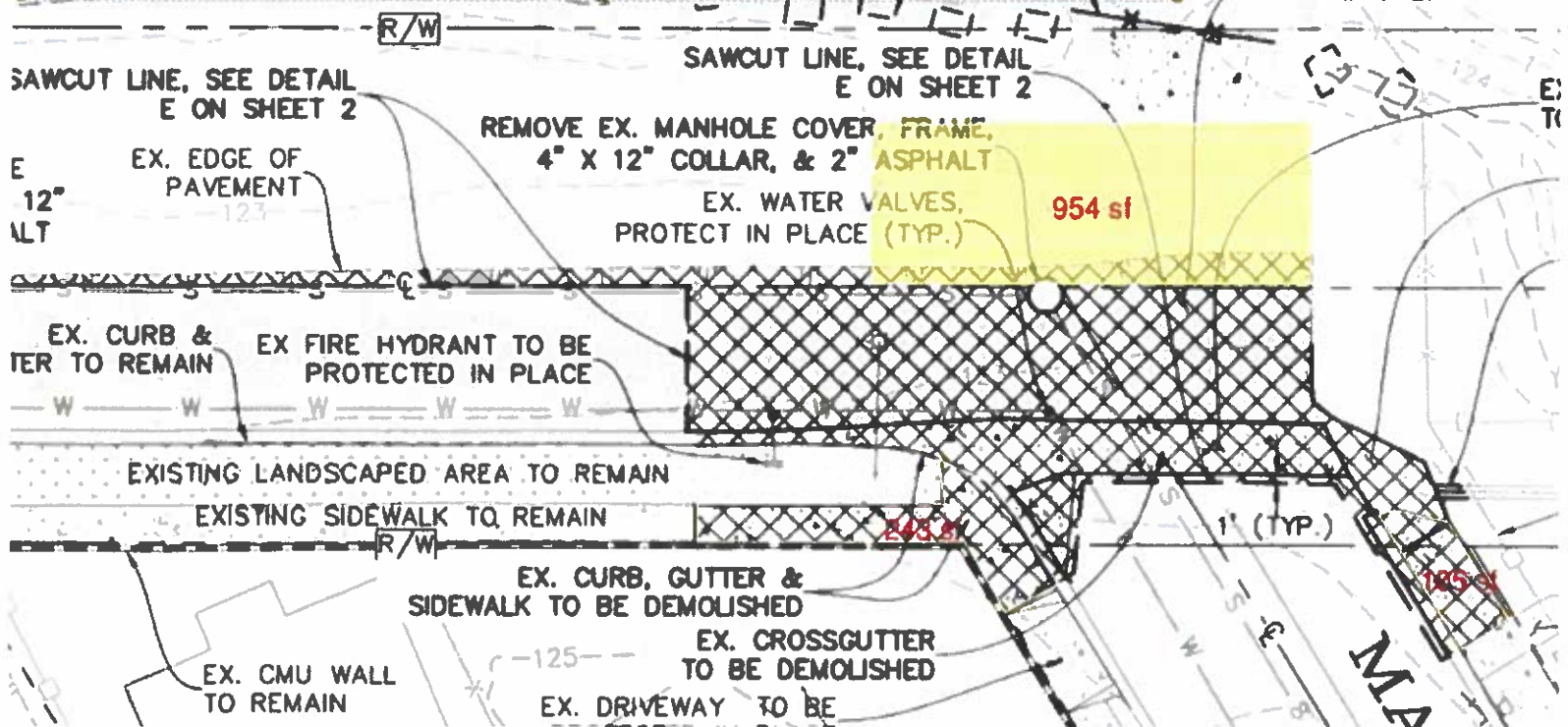
EX. BLDG

BLK 12 LOT 8, MAP  
1318 LEMON ST

BLK 12 LOT  
EX. BLI



EX. AC PAVEMENT TO BE REMOVED



**Bid Items #10 and #13 - Unclassified Excavation and Class II Aggregate Base (6")**



Re: 25-034 Mc Neil St. Improvements - 3.25.26 Additional Quantities

From Cameron Vibbert <cameron@racconstruction.biz>

Date Mon 3/30/2026 5:18 PM

To Luis Cardenas <lcardenas@oceansideca.org>

Cc Eduardo Hernandez <ehernandez@oceansideca.org>; William Deile <wdeile@oceansideca.org>; Ruben Claudio <rclaudio@racconstruction.biz>; Luis Beas <luisb@racconstruction.biz>

**EXTERNAL MESSAGE:** Use caution when opening attachments, clicking links, or responding. When in doubt, please contact CustomerCare@oceansideca.org

Hello Luis,

Please see the tracking updated below (in red) with photos of additional areas identified and marked out today for your records. They will be excavated no more than 6 in depth and repaired with Class II base tomorrow.

Locations	Dims. (FT)	(SF)	CY	ITEM 10 Unclassified Exc.	ITEM 13 Class II Base
Mc Neil	22 X 7.5	165	3.1	\$ 626.39	\$ 498.06
Dub./Mc Neil	25 X 7.5	187.5	3.5	\$ 711.81	\$ 565.97
Mc Neil	8 X 7.5	60	1.1	\$ 227.78	\$ 181.11
Mc Neil	23 X 7.5	172.5	3.2	\$ 654.86	\$ 520.69
Mc Neil	27 X 7.5	202.5	3.8	\$ 768.75	\$ 611.25
Lemon	40 X 7.5	300	5.6	\$ 1,138.89	\$ 905.56
Lemon	25 X 7.5	187.5	3.5	\$ 711.81	\$ 565.97
Lemon	8 X 7.5	60	1.1	\$ 227.78	\$ 181.11
Lemon/Mc Neil	83 X 7.5	622.5	11.5	\$ 2,363.19	\$ 1,879.03
Lemon/Mc Neil	128 X 7.5	960	17.8	\$ 3,644.44	\$ 2,897.78
Mc Neil	25 X 7.5	187.5	3.5	\$ 711.81	\$ 565.97
Mc Neil	11 x 13	143	2.6	\$ 533.00	\$ 423.80
Mc Neil	12 x 28	336	6.2	\$ 1,271.00	\$ 1,010.60
		3584	66.3	\$ 13,591.50	\$10,806.90





Please let me know if you have any questions.

Thank you,

**Cameron Vibbert**

Project Manager

619 507 3749

[cameron@racconstruction.biz](mailto:cameron@racconstruction.biz)

[www.racconstruction.com](http://www.racconstruction.com)

---

**CSLB #1073141 A/B**

**DBE #51009**

**SBE #2027349**

**SLBE #17RC1818**

**PSWMSDC MBE #AZ17581**

**SC MBE #22000146**

**DIR #1000855111**

**NAICS CODES: 236118, 236220, 237310, 238110, 238910, 238990, 532412**



01	DATE PERFORMED 03/05/26	DATE OF REPORT	CONT. JOB NO. 25-034	CONT. RPT. NO. 1.0																
02	WORK PERFORMED BY <b>RAC Construction and Engineering Inc.</b>																			
03	DESCRIPTION OF WORK Additional time to demolish and remove Type B Curb Inlet at Higgins and Mc Neil due to concrete overpour up to 18 in. thick walls and encountering unforeseen waterline not shown on plans.																			

**FOR RESIDENT ENGINEERS ONLY**

New Bill       Approved for Payment      DATE RECEIVED \_\_\_\_\_  
 Resubmittal       Returned for Correction      DATE OF ACTION \_\_\_\_\_

**ATTACHED TO THIS BILL ARE:**

<input checked="" type="checkbox"/>	LABOR CHARGES CEM-4902B
<input checked="" type="checkbox"/>	EQUIPMENT CHARGES CEM 4902C
<input checked="" type="checkbox"/>	MATERIAL CHARGES CEM 4902D

**TOTAL COST SUMMARY, STANDARD MARK-UPS & SUBCONTRACTOR MARK-UP**

Total Equipment (A)	\$ 90.26	Total Other Expenses (F)	\$0.00
Total Materials (B)	\$0.00	Subtotal (C) + (D) + Regular Surcharge + Premium Surcharge + (E) + (F)	\$333.40
Subtotal Equipment & Materials (A) + (B)	\$90.26	Standard Mark-up	\$70.01
Standard Mark-up	21%	Total (C) + (D) + Surcharge + (E) + (F) + Mark-up	\$403.41
Total Equipment & Materials (A) + (B) + Standard Markup	\$109.21	Total Equipment & Materials	\$109.21
Total Regular Labor (C)	\$300.36	Total Equipment & Materials + Total Labor	\$512.63
Regular Labor Surcharge	11%	Mark-up on Subcontracted Work (Only)	\$0.00
Total Premium Labor (D)	\$ -	GRAND TOTAL	\$512.63
Premium Labor Surcharge	11%		
Subtotal Regular & Premium (C+D)	\$300.36		
Subtotal (C) + (D) + Regular Surcharge + Premium Surcharge	\$333.40		
Total Substistence (E)	\$0.00		

SIGNATURE (RESIDENT ENGINEER) \_\_\_\_\_ IN CASE OF QUESTION CONTACT : (Resident Engineer's Use Only)

SIGNATURE (Prime Contractor's Representative) \_\_\_\_\_ NAME \_\_\_\_\_ BUSINESS PHONE \_\_\_\_\_

STATE OF CALIFORNIA DEPARTMENT OF TRANSPORTATION  
**EXTRA WORK BILL - LABOR CHARGES**

CEN-4902B (NEW 7/94) CTR 7541-3497-9

**CASEWB**

**1**

Contract No. 0	CCO No.	Report No.	Labor Surcharge	WCI Class	WCI Rate	Page 2 of 4
-------------------	---------	------------	-----------------	-----------	----------	----------------

Craft ID	Int	Name Last	Hrs	Regular Hours		Premium Hours		Double Time Hours	
				Rate	Total	Rate	Total	Rate	Total
34	J	Conde	2.00	\$ 75.090	\$ 150.18				
35	J	Murrillo	2.00	\$ 75.090	\$ 150.18				
36									
37									
38									
39									
40									
41									
42									
43									
44									
45									
46									
47									
48									
49									
50									
51									
52									
53									
				<b>Total ©</b>	\$ 300.36				
				<b>Total (D)</b>	\$ -				
				<b>Total (E)</b>	\$ -				

**OTHER EXPENSES SUBJECT TO LABOR MARKUP**

Description	Amount
54	

<table border="1"> <tr> <td>Travel Expense</td> <td>Rate</td> <td>Extended Total (F)</td> </tr> <tr> <td></td> <td></td> <td><b>\$300.36</b></td> </tr> </table>		Travel Expense	Rate	Extended Total (F)			<b>\$300.36</b>
Travel Expense	Rate	Extended Total (F)					
		<b>\$300.36</b>					

Signature (Resident Engineer) \_\_\_\_\_ In Case of Question Contact: (Resident Engineer's Use Only)

Signature (Prime Contractor's Representative) \_\_\_\_\_ Name \_\_\_\_\_ Business Phone \_\_\_\_\_

STATE OF CALIFORNIA DEPARTMENT OF TRANSPORTATION  
**EXTRA WORK BILL - EQUIPMENT CHARGES**

CEM-4902C (NEW 7/94)

CASEWB 1

Equip ID Number	Class	Equipment Description			Attach	Regular Hours	Overtime Hours	Regular Rate	Overtime Rate	Extended	Amount
		Make	Code								
04	E45 W/THUMB	BCAT	E45T		2.00		45.13	39.26	\$	90.26	
05									\$	-	
06									\$	-	
07									\$	-	
08									\$	-	
09									\$	-	
10									\$	-	
11									\$	-	
12									\$	-	
13									\$	-	
14									\$	-	
15									\$	-	
16									\$	-	
17									\$	-	
18									\$	-	
19									\$	-	
20									\$	-	
21									\$	-	
22									\$	-	
23									\$	-	
Signature of Resident Engineer					In Case of Question Contact: (Resident Engineer's Use Only)		Total (A)		\$		90.26
Signature of Prime Contractor's Representative					Name		Business Phone				

STATE OF CALIFORNIA DEPARTMENT OF TRANSPORTATION  
**EXTRA WORK BILL - MATERIAL CHARGES**

CEM-4902D (NEW 7/94) CTR 7541-3499-3

CASEWB

1

		Contract No.		CCO No.		Report No.		Page	
		0						4 of 4	
24	Vendor Name	Invoice Description	Units	Unit Cost or Net Pay	Invoice Number	Extended Total		Mo/Day/Yr	-
25	Vendor Name	Invoice Description	Units	Unit Cost or Net Pay	Invoice Number	Extended Total		Mo/Day/Yr	-
26	Vendor Name	Invoice Description	Units	Unit Cost or Net Pay	Invoice Number	Extended Total		Mo/Day/Yr	-
27	Vendor Name	Invoice Description	Units	Unit Cost or Net Pay	Invoice Number	Extended Total		Mo/Day/Yr	-
28	Vendor Name	Invoice Description	Units	Unit Cost or Net Pay	Invoice Number	Extended Total		Mo/Day/Yr	-
29	Vendor Name	Invoice Description	Units	Unit Cost or Net Pay	Invoice Number	Extended Total		Mo/Day/Yr	-
30	Vendor Name	Invoice Description	Units	Unit Cost or Net Pay	Invoice Number	Extended Total		Mo/Day/Yr	-
31	Vendor Name	Invoice Description	Units	Unit Cost or Net Pay	Invoice Number	Extended Total		Mo/Day/Yr	-
32	Vendor Name	Invoice Description	Units	Unit Cost or Net Pay	Invoice Number	Extended Total		Mo/Day/Yr	-
33	Vendor Name	Invoice Description	Units	Unit Cost or Net Pay	Invoice Number	Extended Total		Mo/Day/Yr	-
Signature of Resident Engineer		Signature of Prime Contractor's Representative		Invoice Total (B)				\$	

Mar 3, 2026 at 12:48:27 PM  
1309 W Higgins St  
Oceanside CA 92058  
United States



<b>Company</b>	<b>Date</b>	<b>Truck Count (EA)</b>	<b>Truck Volume (CY)</b>	<b>Volume</b>
R&S	10-Mar	7	10	70
R&S	10-Mar	6	10	60
R&S	10-Mar	5	10	50
R&S	11-Mar	7	10	70
R&S	12-Mar	4	10	40
PRSL	24-Mar	3	10	30
PRSL	24-Mar	4	10	40
PRSL	24-Mar	3	10	30
PRSL	24-Mar	3	10	30
PRSL	24-Mar	3	10	30
PRSL	24-Mar	3	10	30
PRSL	24-Mar	3	10	30
PRSL	24-Mar	2	10	20
PRSL	24-Mar	3	10	30
PRSL	24-Mar	3	10	30
PRSL	24-Mar	3	10	30
PRSL	24-Mar	3	10	30
PRSL	24-Mar	3	10	30
PRSL	24-Mar	3	10	30
PRSL	24-Mar	2	10	20
		<b>73</b>		<b>730</b>

**NON-NEGOTIABLE BILL-OF-LADING  
AND TRANSPORTATION AGREEMENT**

40782,003

BILL NO.

PRINCIPAL CARRIER

PRSL

DATE

3-24-26

**B - 3170976**

JOB #

40782

BROKER #

PRSL

TRUCK #

40122

TRAILER #

6561604

CA #

3952412

ADDRESS

CITY/STATE/ZIP

PH.

UNDERLYING CARRIER (IF ANY)

PRSL

ADDRESS

PH.

SHIPPER

PRSL

RECEIVER

ADDRESS

Mc Neil St & Lemon

ADDRESS

1319 Sleeping Canyon

CITY/STATE/ZIP

Oceanside, CA

CITY/STATE/ZIP

Oceanside, CA

POINT OF ORIGIN

POINT OF DESTINATION

EQUIPMENT TYPE

- SUPER TAG
- 10-WHEELER
- SUPER-10
- STRONG ARM
- TRANSFER
- DBL BOTTOMS
- SEMI-BOTTOM
- END DUMP
- SIDE DUMP
- TRUCK & PUP
- WATER TRUCK
- FLAT BED
- MIXER
- SWEEPER
- OTHER

HOURLY  TONNAGE  PER LOAD

RATE @ \$

	TAG NO.	WEIGHT	COMMODITY	LOADING		UNLOADING		STANDBY TIME	BREAKDOWN OR REASON FOR DELAY
				ARRIVE	DEPART	ARRIVE	DEPART		
1			Dirt	7:00	7:55	8:30	8:40		
2			Dirt	9:15	9:20	9:45	9:50		
3	155166	17.85	Base	10:10	11:00	11:20	11:23		
4			Dirt	11:20	11:25	11:45	11:50		
5									
6									
7									
8									
9									
10									
11									
12									
13									
14									
15									

REPORTING TIME	ENDING TIME	TOTAL TIME	DEDUCTIBLE TIME	NET TIME	TOTAL TONS	ACCESSORIAL OTHER
7:00	1:00	6.0	0	6.0		
START DRIVING TIME LAST TRIP	ARRIVAL TIME AT DUMP LAST TRIP	END LOADING LAST TRIP	RUNNING TIME LAST TRIP	<b>SUBJECT TO TERMS AND CONDITIONS ON REVERSE SIDE</b>		TOTAL CHARGES

ROMAN TRIGO  
DRIVER SIGNATURE

[Signature]  
SHIPPER/RECEIVER (AGENT OR DEBITOR) SIGNATURE

JOB

# NON-NEGOTIABLE BILL-OF-LADING AND TRANSPORTATION AGREEMENT

40782-003

BILL NO.

PRINCIPAL CARRIER PRSL

DATE 3/24/26

**B-2554028**

ADDRESS \_\_\_\_\_

JOB # 40782

CITY/STATE/ZIP \_\_\_\_\_

PH. \_\_\_\_\_

BROKER # PRS

TRUCK # 40089

UNDERLYING CARRIER (IF ANY) \_\_\_\_\_

TRAILER # \_\_\_\_\_

ADDRESS \_\_\_\_\_

PH. \_\_\_\_\_

CA # 3952412

SHIPPER PRSI

RECEIVER \_\_\_\_\_

ADDRESS Mc NEIL & LEMON

ADDRESS \_\_\_\_\_

CITY/STATE/ZIP OCEANSIDE . CA

CITY/STATE/ZIP \_\_\_\_\_

POINT OF ORIGIN \_\_\_\_\_

POINT OF DESTINATION \_\_\_\_\_

**EQUIPMENT TYPE**

- SUPER TAG
- 10-WHEELER
- SUPER-10
- STRONG ARM
- END DUMP
- SIDE DUMP
- DBL BOTTOMS
- SEMI-BOTTOM
- TRUCK & PUP
- WATER TRUCK
- FLAT BED
- MIXER
- SWEEPER
- OTHER \_\_\_\_\_

- HOURLY
- TONNAGE
- PER LOAD

RATE @ \$ \_\_\_\_\_

	TAG NO.	WEIGHT	COMMODITY	LOADING		UNLOADING		STANDBY TIME	BREAKDOWN OR REASON FOR DELAY
				ARRIVE	DEPART	ARRIVE	DEPART		
1				700	743	820	827		
2				900	908	934	940		
3				1015	1047	1109	1111		BASE
4				1120	1125	1141	1148		DIRT
5				1206	1220	1233			
6									
7									
8									
9									
10									
11									
12									
13									
14									
15									

REPORTING TIME <u>7:00</u>	ENDING TIME <u>1:00</u>	TOTAL TIME <u>6.0</u>	DEDUCTIBLE TIME <u>0</u>	NET TIME <u>6.0</u>	TOTAL TONS	ACCESSORIAL OTHER
START DRIVING TIME LAST TRIP	ARRIVAL TIME AT DUMP LAST TRIP	END LOADING LAST TRIP	RUNNING TIME LAST TRIP	<b>SUBJECT TO TERMS AND CONDITIONS ON REVERSE SIDE</b>		TOTAL CHARGES

JAIME

DRIVER SIGNATURE

RG

SHIPPER/RECEIVER (AGENT OR DEBITOR) SIGNATURE

JOB

**NON-NEGOTIABLE BILL-OF-LADING AND TRANSPORTATION AGREEMENT**

BILL NO. 40782 003

PRINCIPAL CARRIER PRS

DATE 3/24/24

**B - 3170322**

ADDRESS \_\_\_\_\_

JOB # 40782

CITY/STATE/ZIP \_\_\_\_\_

PH. \_\_\_\_\_

BROKER # \_\_\_\_\_

UNDERLYING CARRIER (IF ANY) \_\_\_\_\_

TRUCK # 40084

ADDRESS \_\_\_\_\_

PH. \_\_\_\_\_

TRAILER # \_\_\_\_\_

CA# 3552412

SHIPPER

RECEIVER

ADDRESS MORELOT #

ADDRESS 1319 SLEEPING INDIAN

CITY/STATE/ZIP Lemo

CITY/STATE/ZIP \_\_\_\_\_

POINT OF ORIGIN OCEANSIDE CA

POINT OF DESTINATION FALLBROOK

EQUIPMENT TYPE

- 10-WHEELER
- SUPER TAG
- END DUMP
- FLAT BED
- SUPER-10
- TRANSFER
- SIDE DUMP
- MIXER
- STRONG ARM
- DBL BOTTOMS
- TRUCK & PUP
- SWEEPER
- SEMI-BOTTOM
- WATER TRUCK
- OTHER \_\_\_\_\_

HOURLY  TONNAGE  PER LOAD

RATE @ \$ \_\_\_\_\_

TAG NO.	WEIGHT	COMMODITY	LOADING		UNLOADING		STANDBY TIME	BREAKDOWN OR REASON FOR DELAY
			ARRIVE	DEPART	ARRIVE	DEPART		
1	<u>DIRT</u>		<u>700</u>	<u>750</u>	<u>825</u>	<u>830</u>		
2	<u>DIRT</u>		<u>905</u>	<u>910</u>	<u>940</u>	<u>945</u>		
3	<u>BASE</u>	<u>B-29</u>	<u>1015</u>	<u>1055</u>	<u>1105</u>	<u>1120</u>		
4			<u>1145</u>	<u>1150</u>	<u>1210</u>	<u>1215</u>		
5			<u>1030</u>					
6								
7								
8								
9								
10								
11								
12								
13								
14								
15								

REPORTING TIME <u>700</u>	ENDING TIME <u>160</u>	TOTAL TIME <u>6-0</u>	DEDUCTIBLE TIME <u>0</u>	NET TIME <u>6-0</u>	TOTAL TONS	ACCESSORIAL OTHER
START DRIVING TIME LAST TRIP	ARRIVAL TIME AT DUMP LAST TRIP	END LOADING LAST TRIP	RUNNING TIME LAST TRIP	<b>SUBJECT TO TERMS AND CONDITIONS ON REVERSE SIDE</b>		TOTAL CHARGES

[Signature]  
DRIVER SIGNATURE

[Signature]  
SHIPPER/RECEIVER (AGENT OR DEBITOR) SIGNATURE

JOB

**NON-NEGOTIABLE BILL-OF-LADING AND TRANSPORTATION AGREEMENT**

BILL NO.

PRINCIPAL CARRIER

PRSL

DATE

3/24/2026

**A-** 3578022

JOB # 40782

BROKER # PRS

TRUCK # 40113

TRAILER # 29170BY

CA # 3952417

ADDRESS

CITY/STATE/ZIP

PH.

UNDERLYING CARRIER (IF ANY)

ADDRESS

PH.

SHIPPER

PRSL / MOODY'S

RECEIVER

ADDRESS

MONTI ST & LAMON ST

ADDRESS

CITY/STATE/ZIP

OCEANSIDE CA

CITY/STATE/ZIP

OCEANSIDE CA

POINT OF ORIGIN

POINT OF DESTINATION

EQUIPMENT TYPE

- 10-WHEELER
- SUPER-10
- STRONG ARM

- SUPER TAG
- TRANSFER
- DBL BOTTOMS
- SEMI-BOTTOM

- END DUMP
- SIDE DUMP
- TRUCK & PUP
- WATER TRUCK

- FLAT BED
- MIXER
- SWEEPER
- OTHER

- HOURLY
- TONNAGE
- PER LOAD

RATE @ \$ \_\_\_\_\_

	TAG NO.	WEIGHT	COMMODITY	LOADING		UNLOADING		STANDBY TIME	BREAKDOWN OR REASON FOR DELAY
				ARRIVE	DEPART	ARRIVE	DEPART		
1			BRANDS	7:00	8:15	8:50	8:55		
2	155151	17.93	BASE	9:30	9:45	10:02	10:04		
3			BRANDS	10:05	10:10	10:34	10:39		
4	155168	18.32	BASE	10:59	11:20	11:33			
5				1:00					
6									
7									
8									
9									
10									
11									
12									
13									
14									
15									

REPORTING TIME	ENDING TIME	TOTAL TIME	DEDUCTIBLE TIME	NET TIME	TOTAL TONS	ACCESSORIAL OTHER
7:00	1:00	6:00	0	6:00		
START DRIVING TIME LAST TRIP	ARRIVAL TIME AT DUMP LAST TRIP	END LOADING LAST TRIP	RUNNING TIME LAST TRIP	<b>SUBJECT TO TERMS AND CONDITIONS ON REVERSE SIDE</b>		TOTAL CHARGES

*CHAS MURPHY*  
DRIVER SIGNATURE

*[Signature]*  
SHIPPER/RECEIVER (AGENT OR DEBITOR) SIGNATURE

**JOB**

# NON-NEGOTIABLE BILL-OF-LADING AND TRANSPORTATION AGREEMENT

14908



5041 Avenida De La Plata  
Oceanside, CA 92057  
Phone: 760-594-0856

DBE #41734 SBE #14NT1018

UNDERLYING CARRIER (IF ANY)	PH.	DATE	TRUCK #
PAR		3/24/06	N-5
ADDRESS		JOB #	TRAILER #
		46752	
		BROKER #	CA #

SHIPPER PAR ADDRESS \_\_\_\_\_ CITY/STATE/ZIP \_\_\_\_\_

RECEIVER ADDRESS \_\_\_\_\_ CITY/STATE/ZIP \_\_\_\_\_

POINT OF ORIGIN Mc Neil ST POINT OF DESTINATION SLEEPING IVORY / MOORE'S

- EQUIPMENT TYPE
- SUPER TAG
  - 10-WHEELER
  - SUPER-10
  - STRONGARM
  - TRANSFER
  - DBL BOTTOMS
  - SEMI-BOTTOM
  - END DUMP
  - SIDE DUMP
  - TRUCK & PUP
  - WATER TRUCK
  - FLAT BED
  - MIXER
  - OTHER
- HOURLY  TONNAGE  PER LOAD
- RATE @ \$ \_\_\_\_\_

TAG NO.	WEIGHT	COMMODITY	LOADING		UNLOADING		STANDBY TIME	BREAKDOWN OR REASON FOR DELAY
			ARRIVE	DEPART	ARRIVE	DEPART		
1	7185		700	730	800	820		
2	"		850	855	915	930		
3	5760							
4								
5	5200							
6								
7								
8								
9								
10								
11								
12								
REPORTING TIME	ENDING TIME	TOTAL TIME	DEDUCTIBLE TIME	NET TIME	TOTAL TONS	ACCESSORIAL OTHER	TOTAL CHARGES	
7:00	9:00	7:00						
START DRIVING TIME LAST TRIP	ARRIVAL TIME AT DUMP LAST TRIP	END LOADING LAST TRIP	RUNNING TIME LAST TRIP					

DRIVER SIGNATURE \_\_\_\_\_ SHIPPER/RECEIVER (AGENT OR DEBITOR) SIGNATURE \_\_\_\_\_

# NON-NEGOTIABLE BILL-OF-LADING AND TRANSPORTATION AGREEMENT

14793



DBE #41734 SLBE #14NT1018  
5041 Avenida De La Plata  
Oceanside, CA 92057  
Phone: 760-594-0856

UNDERLYING CARRIER (IF ANY)	DATE	TRUCK #
ADDRESS	JOB #	TRAILER #
PH.	BROKER #	CA #

SHIPPER ADDRESS: \_\_\_\_\_ CITY/STATE/ZIP: \_\_\_\_\_

RECEIVER ADDRESS: \_\_\_\_\_ CITY/STATE/ZIP: \_\_\_\_\_

POINT OF ORIGIN: \_\_\_\_\_ POINT OF DESTINATION: \_\_\_\_\_

EQUIPMENT TYPE:  10-WHEELER  SUPER TAG  END DUMP  FLAT BED  HOURLY  TONNAGE  PER LOAD

SUPER-10  TRANSFER  SIDE DUMP  MIXER  TRUCK & PUP  OTHER

STRONG ARM  DBL BOTTOMS  SEMI-BOTTOM  WATER TRUCK

RATE @ \$ \_\_\_\_\_

TAG NO.	WEIGHT	COMMODITY	LOADING		UNLOADING		STANDBY TIME	BREAKDOWN OR REASON FOR DELAY
			ARRIVE	DEPART	ARRIVE	DEPART		
1								
2								
3	161	18.20	555	738	815	822		
4								
5	193	18.48	1205	1205	1225	1251		
6								
7								
8								
9								
10								
11								
12								
REPORTING TIME			ENDING TIME		TOTAL TIME		ACCESSORIAL OTHER	
START DRIVING TIME LAST TRIP			ARRIVAL TIME AT DUMP LAST TRIP		NET TIME		TOTAL TONS	
END LOADING LAST TRIP			RUNNING TIME LAST TRIP		TOTAL CHARGES			

DRIVER SIGNATURE \_\_\_\_\_ SHIPPER/RECEIVER (AGENT OR DEBITOR) SIGNATURE \_\_\_\_\_

## NON-NEGOTIABLE BILL-OF-LADING AND TRANSPORTATION AGREEMENT

14897



5041 Avenida De La Plata  
Oceanside, CA 92057  
Phone: 760-594-0856

<b>UNDERLYING CARRIER (IF ANY)</b> <u>PRS</u>	DATE <u>2-24-20</u>	TRUCK # <u>N-2</u>
ADDRESS _____ PH. _____	JOB # <u>40782</u>	TRAILER # _____
	BROKER # _____	CA# _____

<b>SHIPPER</b> <u>RAC Cont.</u>	<b>RECEIVER</b>
ADDRESS _____	ADDRESS <u>N. River rd</u>
CITY/STATE/ZIP _____	CITY/STATE/ZIP _____
POINT OF ORIGIN <u>Mc Neil st</u>	POINT OF DESTINATION <u>Slackburg Indis</u>

<b>EQUIPMENT TYPE</b>	<input checked="" type="checkbox"/> SUPER TAG	<input type="checkbox"/> END DUMP	<input type="checkbox"/> FLAT BED	<input type="checkbox"/> HOURLY	<input type="checkbox"/> TONNAGE	<input type="checkbox"/> PER LOAD
<input type="checkbox"/> 10-WHEELER	<input type="checkbox"/> TRANSFER	<input type="checkbox"/> SIDE DUMP	<input type="checkbox"/> MIXER	RATE @ \$ _____		
<input type="checkbox"/> SUPER-10	<input type="checkbox"/> DBL BOTTOMS	<input type="checkbox"/> TRUCK & PUP	<input type="checkbox"/> OTHER			
<input type="checkbox"/> STRONG ARM	<input type="checkbox"/> SEMI-BOTTOM	<input type="checkbox"/> WATER TRUCK				

TAG NO.	WEIGHT	COMMODITY	LOADING		UNLOADING		STANDBY TIME	BREAKDOWN OR REASON FOR DELAY
			ARRIVE	DEPART	ARRIVE	DEPART		
1		<u>Gravel</u>	<u>700</u>	<u>720</u>	<u>750</u>	<u>900</u>		<u>Slackburg Indis</u>
2		<u>"</u>	<u>835</u>	<u>845</u>	<u>915</u>	<u>930</u>		<u>N. River rd</u>
3		<u>Gravel</u>	<u>935</u>	<u>1000</u>	<u>1030</u>	<u>1030</u>		<u>roads</u>
4		<u>Gravel</u>	<u>1030</u>	<u>1045</u>	<u>1110</u>	<u>1115</u>		<u>N. River rd</u>
5		<u>Gravel</u>	<u>1140</u>	<u>1145</u>	<u>1200</u>	<u>1220</u>		<u>roads</u>
6								
7								
8								
9								
10								
11								
12								

REPORTING TIME <u>700</u>	ENDING TIME <u>100</u>	TOTAL TIME <u>6</u>	DEDUCTIBLE TIME	NET TIME	TOTAL TONS	ACCESSORIAL OTHER
START DRIVING TIME LAST TRIP	ARRIVAL TIME AT DUMP LAST TRIP	END LOADING LAST TRIP	RUNNING TIME LAST TRIP			TOTAL CHARGES

DRIVER SIGNATURE
SHIPPER/RECEIVER (AGENT OR DEBITOR) SIGNATURE

WHITE - ORIGINAL
CANARY - JOB
PINK - CUSTOMER

# NON-NEGOTIABLE BILL-OF-LADING AND TRANSPORTATION AGREEMENT

14891



5041 Avenida De La Plata  
Oceanside, CA 92057  
Phone: 760-594-0856

UNDERLYING CARRIER (IF ANY) <u>PKS</u> ADDRESS _____ PH. _____	DATE <u>3/24/25</u> JOB # <u>40782</u> BROKER # _____	TRUCK # <u>NB</u> TRAILER # _____ CA # _____
---	---	--

SHIPPER <u>Roe Construction</u> ADDRESS _____ CITY/STATE/ZIP _____	RECEIVER _____ ADDRESS _____ CITY/STATE/ZIP _____
--	---

POINT OF ORIGIN <u>Mc Neil St / Lemon St 92057</u>	POINT OF DESTINATION <u>1317 Sleeping Indian 920</u>
--	--

EQUIPMENT TYPE <input type="checkbox"/> 10-WHEELER <input type="checkbox"/> SUPER-10 <input type="checkbox"/> STRONG ARM	<input type="checkbox"/> SUPER TAG <input type="checkbox"/> TRANSFER <input type="checkbox"/> DBL BOTTOMS <input type="checkbox"/> SEMI-BOTTOM	<input type="checkbox"/> END DUMP <input type="checkbox"/> SIDE DUMP <input type="checkbox"/> TRUCK & PUP <input type="checkbox"/> WATER TRUCK	<input type="checkbox"/> FLAT BED <input type="checkbox"/> MIXER <input type="checkbox"/> OTHER	<input type="checkbox"/> HOURLY <input checked="" type="checkbox"/> TONNAGE <input type="checkbox"/> PER LOAD RATE @ \$ _____
---	---	---	---	--

TAG NO.	WEIGHT	COMMODITY	LOADING		UNLOADING		STANDBY TIME	BREAKDOWN OR REASON FOR DELAY
			ARRIVE	DEPART	ARRIVE	DEPART		
1		<u>Gravel</u>	<u>7:00</u>	<u>7:20</u>	<u>7:55</u>	<u>8:00</u>		
2		<u>Dirt</u>	<u>8:40</u>	<u>8:45</u>	<u>9:10</u>	<u>9:15</u>		
3		<u>Mud</u>	<u>10:20</u>	<u>10:25</u>	<u>10:25</u>	<u>10:25</u>		<u>Mud vs</u>
4		<u>Gravel</u>	<u>11:25</u>	<u>11:30</u>	<u>11:45</u>	<u>12:15</u>		
5		<u>Gravel</u>	<u>12:20</u>	<u>1:00</u>	<u>2:00</u>	<u>2:30</u>		
6								
7								
8								
9								
10								
11								
12								

REPORTING TIME	ENDING TIME	TOTAL TIME	DEDUCTIBLE TIME	NET TIME	TOTAL TONS	ACCESSORIAL OTHER
<u>7:00</u>	<u>2:30</u>	<u>7:30</u>				
START DRIVING TIME LAST TRIP	ARRIVAL TIME AT DUMP LAST TRIP	END LOADING LAST TRIP	RUNNING TIME LAST TRIP			TOTAL CHARGES

James M.  
DRIVER SIGNATURE
PKS  
SHIPPER/RECEIVER (AGENT OR DEBITOR) SIGNATURE

WHITE - ORIGINAL      CANARY - JOB      PINK - CUSTOMER

# NON-NEGOTIABLE BILL-OF-LADING AND TRANSPORTATION AGREEMENT

14886



5041 Avenida De La Plata  
Oceanside, CA 92057  
Phone: 760-594-0856

UNDERLYING CARRIER (IF ANY) <u>PRS</u> ADDRESS _____ PH. _____	DATE <u>3/24/76</u>	TRUCK # <u>N3</u>
	JOB # <u>40752</u>	TRAILER # _____
	BROKER # _____	CA# _____

SHIPPER <u>Rick ...</u> ADDRESS _____ CITY/STATE/ZIP _____ POINT OF ORIGIN _____	RECEIVER _____ ADDRESS _____ CITY/STATE/ZIP <u>30970 Via ... Del Sol</u> POINT OF DESTINATION _____
---	--

EQUIPMENT TYPE

<input type="checkbox"/> 10-WHEELER	<input type="checkbox"/> SUPER TAG	<input type="checkbox"/> END DUMP	<input type="checkbox"/> FLAT BED	<input type="checkbox"/> HOURLY	<input type="checkbox"/> TONNAGE	<input type="checkbox"/> PER LOAD
<input type="checkbox"/> SUPER-10	<input type="checkbox"/> TRANSFER	<input type="checkbox"/> SIDE DUMP	<input type="checkbox"/> MIXER	RATE @ \$ _____		
<input type="checkbox"/> STRONG ARM	<input type="checkbox"/> DBL BOTTOMS	<input type="checkbox"/> TRUCK & PUP	<input type="checkbox"/> OTHER			
<input type="checkbox"/> SEMI-BOTTOM	<input type="checkbox"/> WATER TRUCK					

TAG NO.	WEIGHT	COMMODITY	LOADING		UNLOADING		STANDBY TIME	BREAKDOWN OR REASON FOR DELAY
			ARRIVE	DEPART	ARRIVE	DEPART		
1		<u>D.S.H.</u>	<u>700</u>	<u>725</u>	<u>810</u>	<u>915</u>		
2			<u>840</u>	<u>845</u>	<u>915</u>	<u>970</u>	<u>Months 93</u>	<u>1020</u>
3			<u>1020</u>	<u>1055</u>	<u>1120</u>	<u>1155</u>	<u>Months 1145</u>	<u>1150</u>
4								
5								
6								
7								
8								
9								
10								
11								
12								

MUST BE PAID IN WITHIN  
3 DAYS TO ENSURE PAYMENT  
THANK YOU

REPORTING TIME <u>700</u>	ENDING TIME <u>1</u>	TOTAL TIME <u>60</u>	DEDUCTIBLE TIME	NET TIME	TOTAL TONS	ACCESSORIAL OTHER
START DRIVING TIME LAST TRIP	ARRIVAL TIME AT DUMP LAST TRIP	END LOADING LAST TRIP	RUNNING TIME LAST TRIP			TOTAL CHARGES

Mosey
[Signature]

DRIVER SIGNATURE
SHIPPER/RECEIVER (AGENT OR DEBITOR) SIGNATURE

# NON-NEGOTIABLE BILL-OF-LADING AND TRANSPORTATION AGREEMENT



5041 Avenida De La Plata  
Oceanside, CA 92057  
Phone: 760-594-0856

14866

<b>UNDERLYING CARRIER (IF ANY)</b>	DATE	TRUCK #	JOB #	TRAILER #
ADDRESS	3/17/26	N-4	1	
PH.	BROKER #	CA #		

<b>SHIPPER</b>	<b>RECEIVER</b>
ADDRESS	ADDRESS
CITY/STATE/ZIP	CITY/STATE/ZIP
POINT OF ORIGIN	POINT OF DESTINATION

**EQUIPMENT TYPE**

<input type="checkbox"/> 10-WHEELER	<input type="checkbox"/> SUPER TAG	<input type="checkbox"/> END DUMP	<input type="checkbox"/> FLAT BED	<input type="checkbox"/> HOURLY	<input type="checkbox"/> TONNAGE	<input type="checkbox"/> PER LOAD
<input type="checkbox"/> SUPER-10	<input type="checkbox"/> TRANSFER	<input type="checkbox"/> SIDE DUMP	<input type="checkbox"/> MIXER	RATE @ \$		
<input type="checkbox"/> STRONG ARM	<input type="checkbox"/> DBL BOTTOMS	<input type="checkbox"/> TRUCK & PUP	<input type="checkbox"/> OTHER			
	<input type="checkbox"/> SEMI-BOTTOM	<input type="checkbox"/> WATER TRUCK				

	TAG NO.	WEIGHT	COMMODITY	LOADING		UNLOADING		STANDBY TIME	BREAKDOWN OR REASON FOR DELAY
				ARRIVE	DEPART	ARRIVE	DEPART		
1				7:00	7:25	8:00	8:30		
2				8:55	9:05	9:25	9:35		
3	155158	16.16 ton	base	10:55	11:20	11:45	12:00		
4				11:40	12:00	12:10	12:25		
5	155175	18.01 ton	base	11:45	12:00	12:15	12:15		
6									
7									
8									
9									
10									
11									
12									

REPORTING TIME	ENDING TIME	TOTAL TIME	DEDUCTIBLE TIME	NET TIME	TOTAL TONS	ACCESSORIAL OTHER
7:00	1:15	6:3				
START DRIVING TIME LAST TRIP	ARRIVAL TIME AT DUMP LAST TRIP	END LOADING LAST TRIP	RUNNING TIME LAST TRIP	TOTAL CHARGES		

DRIVER SIGNATURE
 


 SHIPPER/RECEIVER (AGENT OR DEBITOR) SIGNATURE

**NON-NEGOTIABLE BILL-OF-LADING AND TRANSPORTATION AGREEMENT**

BILL NO.

PRINCIPAL CARRIER

PRS Logistics

DATE

3-24-26

**A- 9858341**

ADDRESS

CITY/STATE/ZIP

PH.

JOB #

040782

BROKER #

PRS

TRUCK #

05

UNDERLYING CARRIER (IF ANY)

Too Much Trucking

TRAILER #

CA #

604744

SHIPPER

PRS / RAC

RECEIVER

ADDRESS

Mc Neil St & Lemon St

ADDRESS

1319 Sleeping Indian Rd

CITY/STATE/ZIP

Oceanside CA

CITY/STATE/ZIP

Oceanside

POINT OF ORIGIN

POINT OF DESTINATION

EQUIPMENT TYPE

- SUPER TAG
- END DUMP
- FLAT BED
- 10-WHEELER
- TRANSFER
- SIDE DUMP
- MIXER
- SUPER-10
- DBL BOTTOMS
- TRUCK & PUP
- SWEEPER
- STRONG ARM
- SEMI-BOTTOM
- WATER TRUCK
- OTHER

HOURLY  TONNAGE  PER LOAD

RATE @ \$

	TAG NO.	WEIGHT	COMMODITY	LOADING		UNLOADING		STANDBY TIME	BREAKDOWN OR REASON FOR DELAY
				ARRIVE	DEPART	ARRIVE	DEPART		
1			Grinding	7:00	8:17	8:55	9:00		
2	155152	17.05	Base	9:30	10:00	10:18	10:20		
3			Grinding	10:20	10:22	10:50	10:57		
4	155170	17.17	Base	11:23	11:26	12:00	12:14		
5			Grinding						
6									
7									
8									
9									
10									
11									
12									
13									
14									
15									

REPORTING TIME    ENDING TIME    TOTAL TIME    DEDUCTIBLE TIME    NET TIME    TOTAL TONS    ACCESSORIAL OTHER

7:00    1:00    6:00    0    6:00         

START DRIVING TIME LAST TRIP

ARRIVAL TIME AT DUMP LAST TRIP

END LOADING LAST TRIP

RUNNING TIME LAST TRIP

**SUBJECT TO TERMS AND CONDITIONS ON REVERSE SIDE**

TOTAL CHARGES

DRIVER SIGNATURE

SHIPPER/RECEIVER (AGENT OR DEBITOR) SIGNATURE

JOB

**NON-NEGOTIABLE BILL-OF-LADING AND TRANSPORTATION AGREEMENT**

BILL NO.

PRINCIPAL CARRIER

*PRS Logistics*

DATE

*3-23-26*

**B-1983727**

ADDRESS

CITY/STATE/ZIP

PH.

JOB #

*040782*

BROKER #

*PRS*

TRUCK #

*24*

TRAILER #

*N/A*

CA #

*604749*

UNDERLYING CARRIER (IF ANY)

*Too Much Trucking*

ADDRESS

PH.

SHIPPER

*PRS  
Mc Niel St.  
Oceanside, CA*

RECEIVER

*PRS Dump  
Sleeping Indian  
Oceanside, CA*

ADDRESS

ADDRESS

CITY/STATE/ZIP

CITY/STATE/ZIP

POINT OF ORIGIN

POINT OF DESTINATION

EQUIPMENT TYPE

- SUPER TAG
- END DUMP
- FLAT BED
- 10-WHEELER
- TRANSFER
- SIDE DUMP
- MIXER
- SUPER-10
- DBL BOTTOMS
- TRUCK & PUP
- SWEEPER
- STRONG ARM
- SEMI-BOTTOM
- WATER TRUCK
- OTHER

HOURLY  TONNAGE  PER LOAD

RATE @ \$

	TAG NO.	WEIGHT	COMMODITY	LOADING		UNLOADING		STANDBY TIME	BREAKDOWN OR REASON FOR DELAY
				ARRIVE	DEPART	ARRIVE	DEPART		
1	-	-	Grindings	7:00	7:46	8:16	8:30		
2	-	-	*	9:09	10:00	10:23	10:36		
3	155167	18.21	Base	10:50	11:00	10:25	11:20		
4			Dirt	11:30	11:30	12:04	12:23		
5			Base	12:43	12:46	1:14	1:18		
6									
7									
8									
9									
10									
11									
12									
13									
14									
15									

REPORTING TIME <i>7:00</i>	ENDING TIME <i>1:18</i>	TOTAL TIME <i>6.3</i>	DEDUCTIBLE TIME <i>0</i>	NET TIME <i>6.3</i>	TOTAL TONS	ACCESSORIAL OTHER
START DRIVING TIME LAST TRIP	ARRIVAL TIME AT DUMP LAST TRIP	END LOADING LAST TRIP	RUNNING TIME LAST TRIP	<b>SUBJECT TO TERMS AND CONDITIONS ON REVERSE SIDE</b>		TOTAL CHARGES

DRIVER SIGNATURE

SHIPPER/RECEIVER (AGENT OR DEBITOR) SIGNATURE

**JOB**

**NON-NEGOTIABLE BILL-OF-LADING AND TRANSPORTATION AGREEMENT**

BILL NO. **A-3677898**

PRINCIPAL CARRIER **PRSI**

DATE **3-24-2026**

**A-3677898**

ADDRESS **RAC**

JOB # **PJR340782**

CITY/STATE/ZIP \_\_\_\_\_ PH. \_\_\_\_\_

BROKER # **PRSI**

TRUCK # **919**

UNDERLYING CARRIER (IF ANY) **GoldenBoys Trucking**

TRAILER # \_\_\_\_\_

ADDRESS \_\_\_\_\_ PH. \_\_\_\_\_

CA # **026255**

SHIPPER **McNeil & Lemon St**

RECEIVER **1319 sleeping Indian**

ADDRESS \_\_\_\_\_

ADDRESS \_\_\_\_\_

CITY/STATE/ZIP \_\_\_\_\_

CITY/STATE/ZIP **Oceanside**

POINT OF ORIGIN **Oceanside**

POINT OF DESTINATION \_\_\_\_\_

EQUIPMENT TYPE

- SUPER TAG
- END DUMP
- FLAT BED
- 10-WHEELER
- TRANSFER
- SIDE DUMP
- MIXER
- SUPER-10
- DBL BOTTOMS
- TRUCK & PUP
- SWEEPER
- STRONG ARM
- SEMI-BOTTOM
- WATER TRUCK
- OTHER \_\_\_\_\_

HOURLY  TONNAGE  PER LOAD

RATE @ \$

	TAG NO.	WEIGHT	COMMODITY	LOADING		UNLOADING		STANDBY TIME	BREAKDOWN OR REASON FOR DELAY
				ARRIVE	DEPART	ARRIVE	DEPART		
1				700	830	900	925		
2	5154	1829	Base	930	957	1020	1022		
3			Dirt	1022	1030	1100	1105		
4	5172	1810	Base	1130	1130	1155	1220		
5			Dirt	1220					
6									
7									
8									
9									
10									
11									
12									
13									
14									
15									

3 DAYS IN ADVANCE PAYMENT  
THANK YOU

REPORTING TIME <b>700</b>	ENDING TIME <b>180</b>	TOTAL TIME <b>0</b>	DEDUCTIBLE TIME	NET TIME	TOTAL TONS	ACCESSORIAL OTHER
START DRIVING TIME LAST TRIP	ARRIVAL TIME AT DUMP LAST TRIP	END LOADING LAST TRIP	RUNNING TIME LAST TRIP	<b>SUBJECT TO TERMS AND CONDITIONS ON REVERSE SIDE</b>		TOTAL CHARGES <b>0900</b>

DRIVER SIGNATURE \_\_\_\_\_

SHIPPER/RECEIVER (AGENT OR DEBITOR) SIGNATURE \_\_\_\_\_

**JOB**

# NON-NEGOTIABLE BILL-OF-LADING AND TRANSPORTATION AGREEMENT

BILL NO.

PRINCIPAL CARRIER

PRSL

DATE

3-24-26

**A- 3677890**

JOB # PJR040782

ADDRESS

BROKER # PRSL

CITY/STATE/ZIP

PH.

TRUCK # G13

UNDERLYING CARRIER (IF ANY)

Golden boys Trucking

TRAILER # 0977722

ADDRESS

PH.

CA # 626255

SHIPPER

PRs

RECEIVER

Dumpsite

ADDRESS Mc Neil & Lemon

ADDRESS 1314 Sleeping Indian Rd

CITY/STATE/ZIP Oceanside CA 92054

CITY/STATE/ZIP Oceanside CA, 92057

POINT OF ORIGIN

POINT OF DESTINATION

EQUIPMENT TYPE

- SUPER TAG
- END DUMP
- FLAT BED
- 10-WHEELER
- TRANSFER
- SIDE DUMP
- MIXER
- SUPER-10
- DBL BOTTOMS
- TRUCK & PUP
- SWEEPER
- STRONG ARM
- SEMI-BOTTOM
- WATER TRUCK
- OTHER

HOURLY  TONNAGE  PER LOAD

RATE @ \$

TAG NO.	WEIGHT	COMMODITY	LOADING		UNLOADING		STANDBY TIME	BREAKDOWN OR REASON FOR DELAY
			ARRIVE	DEPART	ARRIVE	DEPART		
1	20	Gravel	7	815	850	900		
2	1234	Base	920	950	1005	1007		
3	1500	Dirt	1004	1012	1044	1047		
4	1200	Base	1117	1130	1145	1215		
5		Dirt	1217	1230				
6	THANK YOU							
7								
8								
9								
10								
11								
12								
13								
14								
15								

REPORTING TIME	ENDING TIME	TOTAL TIME	DEDUCTIBLE TIME	NET TIME	TOTAL TONS	ACCESSORIAL OTHER
7	130	6.5	-	6.5		
START DRIVING TIME LAST TRIP	ARRIVAL TIME AT DUMP LAST TRIP	END LOADING LAST TRIP	RUNNING TIME LAST TRIP	<b>SUBJECT TO TERMS AND CONDITIONS ON REVERSE SIDE</b>		TOTAL CHARGES

Ruban

DRIVER SIGNATURE

[Signature]

SHIPPER/RECEIVER (AGENT OR DEBITOR) SIGNATURE

**JOB**

# NON-NEGOTIABLE BILL-OF-LADING AND TRANSPORTATION AGREEMENT

BILL NO.

PRINCIPAL CARRIER

PRSL

DATE

3-24-25

**A-3677934**

ADDRESS

CITY/STATE/ZIP

PH.

JOB #

040782

BROKER #

PRSL

TRUCK #

108

TRAILER #

CA #

626215

UNDERLYING CARRIER (IF ANY)

Golden Boys TRK

ADDRESS

PH.

SHIPPER

PRSL

RECEIVER

ADDRESS

McNeil St / Lemon St

ADDRESS

30970 Via Puerta Del Sol

CITY/STATE/ZIP

Ocean Ridge

CITY/STATE/ZIP

Bozelli

POINT OF ORIGIN

POINT OF DESTINATION

EQUIPMENT TYPE

- SUPER TAG
- END DUMP
- FLAT BED
- 10-WHEELER
- TRANSFER
- SIDE DUMP
- MIXER
- SUPER-10
- DBL BOTTOMS
- TRUCK & PUP
- SWEEPER
- STRONG ARM
- SEMI-BOTTOM
- WATER TRUCK
- OTHER

HOURLY  TONNAGE  PER LOAD

RATE @ \$

	TAG NO.	WEIGHT	COMMODITY	LOADING		UNLOADING		STANDBY TIME	BREAKDOWN OR REASON FOR DELAY
				ARRIVE	DEPART	ARRIVE	DEPART		
1			Dirt	7:00	8:30	9:09	9:11		
2	155159	18.00	BASE	9:40	10:29	10:10	10:48		
3			Dirt	10:50	11:02	11:29	11:32		
4	155176	17.78	BASE	11:57	12:06	12:25			
5									
6									
7									
8									
9									
10									
11									
12									
13									
14									
15									

REPORTING TIME 7:00	ENDING TIME 1:30	TOTAL TIME 6.5	DEDUCTIBLE TIME 0	NET TIME 6.5	TOTAL TONS	ACCESSORIAL OTHER
START DRIVING TIME LAST TRIP	ARRIVAL TIME AT DUMP LAST TRIP	END LOADING LAST TRIP	RUNNING TIME LAST TRIP	<b>SUBJECT TO TERMS AND CONDITIONS ON REVERSE SIDE</b>		TOTAL CHARGES

Jose Lopez  
DRIVER SIGNATURE

[Signature]  
SHIPPER/RECEIVER (AGENT OR DEBITOR) SIGNATURE

**JOB**

40782.002

## NON-NEGOTIABLE BILL-OF-LADING AND TRANSPORTATION AGREEMENT

14794



5041 Avenida De La Plata  
Oceanside, CA 92057  
Phone: 760-594-0856

UNDERLYING CARRIER (IF ANY) <u>Q29</u> ADDRESS _____ PH. _____	DATE <u>3/25/21</u> JOB # <u>010732</u> BROKER # _____	TRUCK # <u>117</u> TRAILER # _____ CA # _____
---	--	---

SHIPPER <u>QAC</u> ADDRESS _____ CITY/STATE/ZIP _____ POINT OF ORIGIN <u>Milpitas</u>	RECEIVER <u>Milpitas</u> ADDRESS _____ CITY/STATE/ZIP _____ POINT OF DESTINATION _____
--	---

EQUIPMENT TYPE	<input type="checkbox"/> SUPER TAG <input type="checkbox"/> 10-WHEELER <input type="checkbox"/> SUPER-10 <input type="checkbox"/> STRONG ARM	<input type="checkbox"/> TRANSFER <input type="checkbox"/> DBL BOTTOMS <input type="checkbox"/> SEMI-BOTTOM	<input type="checkbox"/> END DUMP <input type="checkbox"/> SIDE DUMP <input type="checkbox"/> TRUCK & PUP <input type="checkbox"/> WATER TRUCK	<input type="checkbox"/> FLAT BED <input type="checkbox"/> MIXER <input type="checkbox"/> OTHER	<input type="checkbox"/> HOURLY <input type="checkbox"/> TONNAGE <input type="checkbox"/> PER LOAD RATE @ \$ _____
----------------	---	---	---	---	---

TAG NO.	WEIGHT	COMMODITY	LOADING		UNLOADING		STANDBY TIME	BREAKDOWN OR REASON FOR DELAY
			ARRIVE	DEPART	ARRIVE	DEPART		
1		Cranks	7:20	8:40	9:00	9:05		
2			7:20	7:31	7:46	9:50		
3			8:23	10:12	10:30	10:35		
4		Dily Crank	10:45	11:20	11:41	11:50		
5	227	Base	12:00	12:30	12:43	2:45		
6	273	Base	10:45	11:5	1:31	2:15		
7		d.u.	2:00	2:15	2:40	2:45		
8	253	Base	3:15	3:30	3:41	3:12		
9		D.L	3-12	4:00				
10								
11		(crank)						
12								

REPORTING TIME <u>7:20</u>	ENDING TIME <u>5:00</u>	TOTAL TIME <u>9.5</u>	DEDUCTIBLE TIME	NET TIME <u>9.5</u>	TOTAL TONS	ACCESSORIAL OTHER
START DRIVING TIME LAST TRIP	ARRIVAL TIME AT DUMP LAST TRIP	END LOADING LAST TRIP	RUNNING TIME LAST TRIP			TOTAL CHARGES

[Signature]  
DRIVER SIGNATURE

[Signature]  
SHIPPER/RECEIVER (AGENT OR DEBITOR) SIGNATURE

WHITE - ORIGINAL      CANARY - JOB      PINK - CUSTOMER

## NON-NEGOTIABLE BILL-OF-LADING AND TRANSPORTATION AGREEMENT



5041 Avenida De La Plata  
Oceanside, CA 92057  
Phone: 760-594-0856

14887

<b>UNDERLYING CARRIER (IF ANY)</b> <u>PRS</u>	<b>DATE</b> <u>3/25/76</u>	<b>TRUCK #</b> <u>N-4</u>
<b>ADDRESS</b> _____ <b>PH.</b> _____	<b>JOB #</b> _____	<b>TRAILER #</b> _____
	<b>BROKER #</b> _____	<b>CA #</b> _____

<b>SHIPPER</b> <u>RAC</u>	<b>RECEIVER</b>
<b>ADDRESS</b> _____	<b>ADDRESS</b> _____
<b>CITY/STATE/ZIP</b> _____	<b>CITY/STATE/ZIP</b> _____

<b>POINT OF ORIGIN</b> <u>Merrill St</u>	<b>POINT OF DESTINATION</b> <u>Steeping Indian</u>
--	--

<b>EQUIPMENT TYPE</b>	<input type="checkbox"/> SUPER TAG	<input type="checkbox"/> END DUMP	<input type="checkbox"/> FLAT BED	<input type="checkbox"/> HOURLY	<input type="checkbox"/> TONNAGE	<input type="checkbox"/> PER LOAD
<input type="checkbox"/> 10-WHEELER	<input type="checkbox"/> TRANSFER	<input type="checkbox"/> SIDE DUMP	<input type="checkbox"/> MIXER	<b>RATE @ \$</b> _____		
<input type="checkbox"/> SUPER-10	<input type="checkbox"/> DBL BOTTOMS	<input type="checkbox"/> TRUCK & PUP	<input type="checkbox"/> OTHER			
<input type="checkbox"/> STRONG ARM	<input type="checkbox"/> SEMI-BOTTOM	<input type="checkbox"/> WATER TRUCK				

TAG NO.	WEIGHT	COMMODITY	LOADING		UNLOADING		STANDBY TIME	BREAKDOWN OR REASON FOR DELAY
			ARRIVE	DEPART	ARRIVE	DEPART		
1			7:30	8:00	9:20	9:30		
2			9:45	9:50	10:00	10:10		
3			10:25	10:45	10:55	11:05		
4			11:20	12:00	12:30	12:40		
5			1:05	1:55	2:30	2:45		
6			2:00	3:50				
7								
8								
9								
10								
11								
12								

<b>REPORTING TIME</b>	<b>ENDING TIME</b>	<b>TOTAL TIME</b>	<b>DEDUCTIBLE TIME</b>	<b>NET TIME</b>	<b>TOTAL TONS</b>	<b>ACCESSORIAL OTHER</b>
<u>7:30</u>	<u>1:39</u>	<u>4:0</u>				
<small>START DRIVING TIME LAST TRIP</small>	<small>ARRIVAL TIME AT DUMP LAST TRIP</small>	<small>END LOADING LAST TRIP</small>	<small>RUNNING TIME LAST TRIP</small>			<b>TOTAL CHARGES</b>

*Del White*  
DRIVER SIGNATURE

*RE*  
SHIPPER/RECEIVER (AGENT OR DEBITOR) SIGNATURE

**NON-NEGOTIABLE BILL-OF-LADING  
AND TRANSPORTATION AGREEMENT**



5041 Avenida De La Plata  
Oceanside, CA 92057  
Phone: 760-594-0856

14892

UNDERLYING CARRIER (IF ANY) <u>PRS</u>	DATE <u>9/25/11</u>	TRUCK # <u>NB</u>
	JOB # <u>40727</u>	TRAILER #
	BROKER #	CA #

SHIPPER <u>Rac Construction</u>	RECEIVER
ADDRESS	ADDRESS
CITY/STATE/ZIP	CITY/STATE/ZIP
POINT OF ORIGIN <u>Mt. View St, Oceanside</u>	POINT OF DESTINATION <u>4210 Oceanside 92056</u>

<b>EQUIPMENT TYPE</b>	<input checked="" type="checkbox"/> SUPER TAG	<input type="checkbox"/> END DUMP	<input type="checkbox"/> FLAT BED	<input type="checkbox"/> HOURLY	<input type="checkbox"/> TONNAGE	<input type="checkbox"/> PER LOAD
<input type="checkbox"/> 10-WHEELER	<input type="checkbox"/> TRANSFER	<input type="checkbox"/> SIDE DUMP	<input type="checkbox"/> MIXER	RATE @ \$ _____		
<input type="checkbox"/> SUPER-10	<input type="checkbox"/> DBL BOTTOMS	<input type="checkbox"/> TRUCK & PUP	<input type="checkbox"/> OTHER			
<input type="checkbox"/> STRONG ARM	<input type="checkbox"/> SEMI-BOTTOM	<input type="checkbox"/> WATER TRUCK				

TAG NO.	WEIGHT	COMMODITY	LOADING		UNLOADING		STANDBY TIME	BREAKDOWN OR REASON FOR DELAY
			ARRIVE	DEPART	ARRIVE	DEPART		
1		Dirt	730	9:00	8:35	8:40		
2		Gravel	7:10	9:15	9:25	9:40		
3		"	9:55	10:05	10:25	10:30		
4		"	10:45	10:55	11:05	11:30		
5		<u>LOADING</u>	12:00	1:00	1:30	2:00		
6								
7								
8								
9								
10								
11								
12								

REPORTING TIME <u>7:30</u>	ENDING TIME <u>2:00</u>	TOTAL TIME <u>10.5/11</u>	DEDUCTIBLE TIME	NET TIME	TOTAL TONS	ACCESSORIAL OTHER
START DRIVING TIME LAST TRIP	ARRIVAL TIME AT DUMP LAST TRIP	END LOADING LAST TRIP	RUNNING TIME LAST TRIP			TOTAL CHARGES

Teame  
DRIVER SIGNATURE

[Signature]  
SHIPPER/RECEIVER (AGENT OR DEBITOR) SIGNATURE

## NON-NEGOTIABLE BILL-OF-LADING AND TRANSPORTATION AGREEMENT



5041 Avenida De La Plata  
Oceanside, CA 92057  
Phone: 760-594-0856

14399

UNDERLYING CARRIER (IF ANY) <u>PRS</u> ADDRESS _____ PH. _____	DATE <u>3.28.20</u> JOB # <u>5072</u> BROKER # _____	TRUCK # <u>W-2</u> TRAILER # _____ CA # _____
---	--	---

SHIPPER ADDRESS <u>Rose Coast</u> CITY/STATE/ZIP <u>Oceanside</u> POINT OF ORIGIN <u>M. mail st</u>	RECEIVER ADDRESS <u>Moss</u> CITY/STATE/ZIP <u>N. River rd</u> POINT OF DESTINATION <u>moody's</u>
--	---

EQUIPMENT TYPE	<input checked="" type="checkbox"/> SUPER TAG <input type="checkbox"/> TRANSFER <input type="checkbox"/> DBL BOTTOMS <input type="checkbox"/> SEMI-BOTTOM	<input type="checkbox"/> END DUMP <input type="checkbox"/> SIDE DUMP <input type="checkbox"/> TRUCK & PUP <input type="checkbox"/> WATER TRUCK	<input type="checkbox"/> FLAT BED <input type="checkbox"/> MIXER <input type="checkbox"/> OTHER	<input type="checkbox"/> HOURLY <input type="checkbox"/> TONNAGE <input type="checkbox"/> PER LOAD RATE @ \$ _____
----------------	--	---	---	---

TAG NO.	WEIGHT	COMMODITY	LOADING		UNLOADING		STANDBY TIME	BREAKDOWN OR REASON FOR DELAY
			ARRIVE	DEPART	ARRIVE	DEPART		
1		Net / good	730	920	850	855	N River rd	Net / good
2		Gravel	725	945	1005	1010		moody's
3		Gravel	1015	1030	1050	1055		moody's
4			1105	1118			TORONTO	OR CASE
5		Class 2 Bricks	1170	1195	1200	1205		
6		" "	1205	1235	1240	1245		
7			1245	1255				
8								
9								
10								
11								
12								

REPORTING TIME	ENDING TIME	TOTAL TIME	DEDUCTIBLE TIME	NET TIME	TOTAL TONS	ACCESSORIAL OTHER
730	1255	6				
START DRIVING TIME LAST TRIP	ARRIVAL TIME AT DUMP LAST TRIP	END LOADING LAST TRIP	DEPARTING TIME LAST TRIP	TOTAL CHARGES		

DRIVER SIGNATURE
 


 SHIPPER/RECEIVER (AGENT OR DEBITOR) SIGNATURE

WHITE - ORIGINAL      CANARY - JOB      PINK - CUSTOMER

## NON-NEGOTIABLE BILL-OF-LADING AND TRANSPORTATION AGREEMENT

14310



5041 Avenida De La Plata  
Oceanside, CA 92057  
Phone: 760-594-0856

DBE #41734 SLBE #14NT1018

UNDERLYING CARRIER (IF ANY) <u>PKS</u> ADDRESS _____ PH. _____	DATE <u>3/25/26</u> JOB # <u>40782</u> BROKER # _____	TRUCK # <u>115</u> TRAILER # _____ CA # _____
---	---	---

SHIPPER <u>RAC</u> ADDRESS _____ CITY/STATE/ZIP _____ POINT OF ORIGIN <u>16 NEW ST</u>	RECEIVER _____ ADDRESS _____ CITY/STATE/ZIP _____ POINT OF DESTINATION <u>MOODYS / PUNAH DEL SOC</u>
---	---

EQUIPMENT TYPE	<input type="checkbox"/> SUPER TAG <input type="checkbox"/> TRANSFER <input type="checkbox"/> DBL BOTTOMS <input type="checkbox"/> SEMI-BOTTOM	<input type="checkbox"/> END DUMP <input type="checkbox"/> SIDE DUMP <input type="checkbox"/> TRUCK & PUP <input type="checkbox"/> WATER TRUCK	<input type="checkbox"/> FLAT BED <input type="checkbox"/> MIXER <input type="checkbox"/> OTHER	<input checked="" type="checkbox"/> HOURLY <input type="checkbox"/> TONNAGE <input type="checkbox"/> PER LOAD
RATE @ \$ _____				

TAG NO.	WEIGHT	COMMODITY	LOADING		UNLOADING		STANDBY TIME	BREAKDOWN OR REASON FOR DELAY
			ARRIVE	DEPART	ARRIVE	DEPART		
1		<u>CRINDS</u>	<u>730</u>	<u>820</u>	<u>850</u>	<u>855</u>		
2			<u>905</u>	<u>915</u>	<u>925</u>	<u>945</u>		
3			<u>1027</u>	<u>1055</u>	<u>1025</u>	<u>1025</u>		
4			<u>1035</u>	<u>1110</u>	<u>1135</u>	<u>1140</u>		
5			<u>1100</u>	<u>1220</u>				
6								
7								
8								
9								
10								
11								
12								

REPORTING TIME	ENDING TIME	TOTAL TIME	DEDUCTIBLE TIME	NET TIME	TOTAL TONS	ACCESSORIAL OTHER
<u>730</u>	<u>130</u>	<u>6HR</u>				
START DRIVING TIME LAST TRIP	ARRIVAL TIME AT DUMP LAST TRIP	END LOADING LAST TRIP	RUNNING TIME LAST TRIP	TOTAL CHARGES		

\_\_\_\_\_  
 DRIVER SIGNATURE  
 WHITE - ORIGINAL

\_\_\_\_\_  
 SHIPPER/RECEIVER (AGENT OR DEBITOR) SIGNATURE  
 CANARY - JOB      PINK - CUSTOMER

# NON-NEGOTIABLE BILL-OF-LADING AND TRANSPORTATION AGREEMENT

14930



5041 Avenida De La Plata  
Oceanside, CA 92057  
Phone: 760-594-0856

<b>UNDERLYING CARRIER (IF ANY)</b>	<b>DATE</b> 3/25/20	<b>TRUCK #</b> 113	
<b>ADDRESS</b>	<b>JOB #</b>	<b>TRAILER #</b>	
<b>PH.</b>	<b>BROKER #</b>	<b>CA #</b>	

**SHIPPER** SAC construction

**ADDRESS**

**CITY/STATE/ZIP**

**POINT OF ORIGIN**

**RECEIVER**

**ADDRESS**

**CITY/STATE/ZIP**

**POINT OF DESTINATION**

**EQUIPMENT TYPE**

<input type="checkbox"/> 10-WHEELER	<input type="checkbox"/> SUPER TAG	<input type="checkbox"/> END DUMP	<input type="checkbox"/> FLAT BED	<input type="checkbox"/> HOURLY	<input type="checkbox"/> TONNAGE	<input type="checkbox"/> PER LOAD
<input type="checkbox"/> SUPER-10	<input type="checkbox"/> TRANSFER	<input type="checkbox"/> SIDE DUMP	<input type="checkbox"/> MIXER	RATE @ \$ _____		
<input type="checkbox"/> STRONG ARM	<input type="checkbox"/> DBL BOTTOMS	<input type="checkbox"/> TRUCK & PUP	<input type="checkbox"/> OTHER			
	<input type="checkbox"/> SEMI-BOTTOM	<input type="checkbox"/> WATER TRUCK				

TAG NO.	WEIGHT	COMMODITY	LOADING		UNLOADING		STANDBY TIME	BREAKDOWN OR REASON FOR DELAY
			ARRIVE	DEPART	ARRIVE	DEPART		
1		Gravel	7:00	9:00	9:15	1:00		
2		Gravel	7:25	10:10	10:35	1:40	30	Via Puerto
3		Gravel	11:05	1:05	2:05	2:10		
4								
5								
6								
7								
8	25034	Gravel	2:05	2:10				
9								
10								
11								
12								

<b>REPORTING TIME</b> 7:30	<b>ENDING TIME</b> 4:00	<b>TOTAL TIME</b> 8.8	<b>DEDUCTIBLE TIME</b>	<b>NET TIME</b>	<b>TOTAL TONS</b>	<b>ACCESSORIAL OTHER</b>
<b>START DRIVING TIME LAST TRIP</b>	<b>ARRIVAL TIME AT DUMP LAST TRIP</b>	<b>END LOADING LAST TRIP</b>	<b>RUNNING TIME LAST TRIP</b>			<b>TOTAL CHARGES</b>

Moses II.

\_\_\_\_\_  
DRIVER SIGNATURE

R E

\_\_\_\_\_  
SHIPPER/RECEIVER (AGENT OR DEBITOR) SIGNATURE



DIR # 1000043651  
 E.P.A. ID. NO. CAR000187922  
 US DOT # 479041

# RUST & SONS TRUCKING

15353 Old Hwy 80 • El Cajon CA 92021  
 (619) 443-6193 • FAX (619) 443-9364

WEEK END PAY ROLL  
**FREIGHT BILL**  
**BOL# 512995**

PRINCIPAL OR OVER-  
 LYING CARRIER

*Rust & Sons*

DATE

*3-9-76*

INV. TRIP #

*80867*

ADDRESS

CITY

STATE

UNDERLYING

CARRIER (IF ANY)

PAYROLL#

*219417*

TRUCK #

*214*

TRAILER #

SHIPPER

CONSIGNER

*RAC*

CONSIGNEE

STREET OR BOX

STREET OR BOX

CITY / STATE / ZIP

CITY / STATE / ZIP

NAME AND ADDRESS OF DESTOR IF OTHER THAN CONSIGNOR

PT. OF ORIGIN

*RAC Const  
 McNeil St & Laron St*

PT. OF DESTINATION

*Oceanside, Ca 92054*

BEG. ODOMETER	ENDING ODOMETER	TOTAL MILES	<input type="checkbox"/> HOURLY	RATE	JOB NO.	P.O. NO.
<i>37971</i>	<i>38557</i>	<i>141</i>	<input type="checkbox"/> TONNAGE			

TAG NO.	WEIGHT	COMMODITY	LOADING		UNLOADING		STANDBY TIME	BREAKDOWN / REASON FOR DELAY
			ARRIVE	DEPART	ARRIVE	DEPART		
		<i>Base</i>	<i>8:50</i>	<i>9:08</i>	<i>9:20</i>	<i>9:25</i>		
		<i>Dirt</i>	<i>9:27</i>	<i>9:43</i>	<i>10:00</i>	<i>10:05</i>		
		<i>Base</i>	<i>10:06</i>	<i>10:15</i>	<i>10:30</i>	<i>10:33</i>		
		<i>Dirt</i>	<i>10:35</i>	<i>10:45</i>	<i>11:00</i>	<i>11:02</i>		
		<i>Base</i>	<i>11:05</i>	<i>11:13</i>	<i>11:25</i>	<i>11:30</i>		
		<i>Dirt</i>	<i>11:22</i>	<i>11:46</i>	<i>12:00</i>	<i>12:02</i>		
		<i>Base</i>	<i>12:04</i>	<i>12:25</i>	<i>12:25</i>	<i>12:30</i>		
		<i>Dirt</i>	<i>12:32</i>	<i>12:46</i>	<i>1:00</i>	<i>1:04</i>		
		<i>Base</i>	<i>1:10</i>	<i>1:15</i>	<i>1:30</i>	<i>1:34</i>		
		<i>Dirt</i>	<i>1:45</i>	<i>1:50</i>				<i>5 Dirt 5 Base</i>
<i>Drives time 7:30 - 4:30</i>								
<i>9 hours + 1</i>								<i>10 total</i>

TYPE OF DUMP TRUCK EQUIPMENT <input checked="" type="checkbox"/> SUPER DUMP TRUCK <input type="checkbox"/> 2 AXLE <input type="checkbox"/> 3 AXLE  <input type="checkbox"/> TRACTOR <input type="checkbox"/> 2 AXLE <input type="checkbox"/> 3 AXLE  <input type="checkbox"/> TRAILER(S) <input type="checkbox"/> BOTTOM DUMP DBL <input type="checkbox"/> TRANSFER <input type="checkbox"/> END DUMP SEMI  <input checked="" type="checkbox"/> CARRIER <input checked="" type="checkbox"/> DRIVER SIGNATURE <input checked="" type="checkbox"/> CONSIGNEE SIGNATURE	REPORTING TIME	ENDING TIME	TOTAL TIME	TOTAL TONS
	<i>8:45</i>	<i>2:15</i>		
	START DRIVING TIME LAST TRIP	ARRIVAL TIME AT DUMP LAST TRIP	DEDUCTIBLE TIME	FUEL SURCHARGE
	<i>1:50</i>			
END UNLOADING LAST TRIP	RUNNING TIME LAST TRIP	NET TIME	TOTAL CHARGES	
	<i>20 min</i>	<i>5 1/2</i>		

TERMS: A SERVICE CHARGE OF 1 1/2% WILL BE ASSESSED TO ALL ACCOUNTS PAST DUE 30 DAYS AS PERMITTED BY LAW. COURT COSTS, ATTORNEY FEES, AND ALL COSTS THAT ARISE FROM ANY PROCEEDINGS FOR THE COLLECTION OF AMOUNTS DUE TO THE ABOVE CARRIER FOR WORK DONE FOR THE ABOVE CUSTOMER WILL BE PAID BY THE ABOVE CUSTOMER.

PUBLIC UTILITIES COMMISSION REQUIRES PAYMENT FOR THESE CHARGES NOT LATER THAN THE 25<sup>TH</sup> DAY OF THE MONTH FOLLOWING DATE OF THIS BILL.



DIR # 1000043651  
 E.P.A. ID. NO. CAR000187922  
 US DOT # 479041

# RUST & SONS TRUCKING

15353 Old Hwy 80 • El Cajon CA 92021  
 (619) 443-6193 • FAX (619) 443-9364

WEEK END PAY ROLL  
**FREIGHT BILL**  
 BOL# 512631

PRINCIPAL OR OVER-LYING CARRIER Rust & Son's DATE 3/11/26 INV. TRIP # 80968  
 ADDRESS \_\_\_\_\_ CITY \_\_\_\_\_ STATE \_\_\_\_\_ ZIP \_\_\_\_\_ PAYROLL# 219452  
 UNDERLYING CARRIER (IF ANY) \_\_\_\_\_ TRUCK # 153  
 TRAILER # \_\_\_\_\_

SHIPPER CONSIGNEE RAC Const  
 STREET OR BOX \_\_\_\_\_ CITY /STATE /ZIP \_\_\_\_\_

NAME AND ADDRESS OF DESTOR IF OTHER THAN CONSIGNOR  
RAC Const

PT. OF ORIGIN McNeil St & Lemon St Oceanside 92058  
 PT. OF DESTINATION 1225 Oceanside Blvd Oceanside 92056

BEG. ODOMETER 394,144 ENDING ODOMETER 394,288 TOTAL MILES 144  
 HOURLY RATE \_\_\_\_\_ JOB NO. \_\_\_\_\_ P.O. NO. \_\_\_\_\_  
 TONNAGE

TAG NO.	WEIGHT	COMMODITY	LOADING		UNLOADING		STANDBY TIME	BREAKDOWN / REASON FOR DELAY
			ARRIVE	DEPART	ARRIVE	DEPART		
		Dir #	7:30	7:40	7:50	7:55		
			8:10	8:30	8:40	8:50		
			9:05	9:22	9:35	9:38		
			9:50	10:07	10:23	10:25		
			10:37	11:32	11:45	11:50		
			12:05	12:28	12:45	12:55		
			1:05	1:25		2:30p		

*11 loads*

*(6:15m to 3:30p)*

<input checked="" type="checkbox"/> SUPER DUMP TRUCK <input type="checkbox"/> 2 AXLE <input type="checkbox"/> 3 AXLE	<input type="checkbox"/> TRACTOR <input type="checkbox"/> 2 AXLE <input type="checkbox"/> 3 AXLE	<input type="checkbox"/> TRAILER(S) <input type="checkbox"/> BOTTOM DUMP DBL <input type="checkbox"/> TRANSFER <input type="checkbox"/> END DUMP SEMI	REPORTING TIME <u>7:30m</u>	ENDING TIME	TOTAL TIME <u>9 hour 15min</u>	TOTAL TONS
<input type="checkbox"/> START DRIVING TIME LAST TRIP <input type="checkbox"/> END UNLOADING LAST TRIP			START DRIVING TIME LAST TRIP	ARRIVAL TIME AT DUMP LAST TRIP	DEDUCTIBLE TIME	FUEL SURCHARGE
			NET TIME <u>45min</u>	NET TIME <u>7</u>	TOTAL CHARGES	

X CARRIER  
 X DRIVER SIGNATURE Jose Ben  
 X CONSIGNEE SIGNATURE

TERMS: A SERVICE CHARGE OF 1% WILL BE ASSESSED TO ALL ACCOUNTS PAST DUE 30 DAYS AS PERMITTED BY LAW. COURT COSTS, ATTORNEY FEES, AND ALL COSTS THAT ARISE FROM ANY PROCEEDINGS FOR THE COLLECTION OF AMOUNTS DUE TO THE ABOVE CARRIER FOR WORK DONE FOR THE ABOVE CUSTOMER WILL BE PAID BY THE ABOVE CUSTOMER.  
 PUBLIC UTILITIES COMMISSION REQUIRES PAYMENT FOR THESE CHARGES NOT LATER THAN THE 25<sup>TH</sup> DAY OF THE MONTH FOLLOWING DATE OF THIS BILL.  
 ATTENTION UNDERLYING CARRIERS: No payment will be made for TICKETS NOT COMPLETELY filled out.

# CONSTRUCTION & DEMOLITION DIVERSION CERTIFICATE

RECEIVED AT: MOODY'S - EL CORAZON RECLAMATION  
 PROCESSED AT: 3210 OCEANSIDE BLVD., OCEANSIDE, CA

MOODY'S  
 3210 OCEANSIDE BLVD  
 BONSALL, CA 92003  
 760-431-0342

(760) 433-3316

SALE

P.O. \_\_\_\_\_ JOB # \_\_\_\_\_ DATE 11-11-06

CASH \_\_\_\_\_ CHECK \_\_\_\_\_ CHARGE  COMMERCIAL \_\_\_\_\_ RESIDENCE \_\_\_\_\_ TIME 12:20-12:40

NAME \_\_\_\_\_

CITY OF ORIGIN All construction

JOB LOCATION \_\_\_\_\_ TONS 20 DIVERSION 100%

PU \_\_\_\_\_ TRAILER \_\_\_\_\_ FLATBED \_\_\_\_\_ BOBTAIL \_\_\_\_\_ 10-WHEEL D END DUMP \_\_\_\_\_ T & T \_\_\_\_\_

MATERIAL Light

LOAD COUNT	1	2	3	4	5	6	7	8	9	10
<u>2</u>	<u>X</u>									

# LOADS 2 X PRICE 1.650

OTHER CHARGES \$ 1300.00

TOTAL DUE \_\_\_\_\_

TRUCK # 152

SIGNATURE \_\_\_\_\_

This certifies that the company above has utilized a recycling facility to divert construction demolition materials in accordance with LEED requirements. The diversion is based on an overall tonnage percentage of the respective facility.

MOODY'S is not responsible for damage to vehicle while being loaded or unloaded in yard.

JOB COPY 365251

Batch #: 130  
 03/11/26  
 APPR CODE: 10/19/68  
 ENCRYPTED BY ELAVON  
 Trace: 18  
 AMEX  
 \*\*\*\*\*2000  
 REF#: 00000004  
 13-5402  
 Manual CF

AMOUNT \$1,300.00  
 SURCHARGE \$39.00  
 TOTAL \$1,339.00

APPROVED

THANK YOU

CUSTOMER COPY



DIR # 1000043651  
 E.P.A. ID. NO. CAR000187922  
 US DOT # 479041

# RUST & SONS TRUCKING

15353 Old Hwy 80 • El Cajon CA 92021  
 (619) 443-6193 • FAX (619) 443-9364

WEEK END PAY ROLL  
**FREIGHT BILL**  
**BOL# 516253**

PRINCIPAL OR OVER-LYING CARRIER Rust DATE 3/10/26 INV. TRIP # 80893  
 ADDRESS \_\_\_\_\_ PAYROLL# 219429  
 CITY \_\_\_\_\_ ZIP \_\_\_\_\_ TRUCK # R181  
 STATE \_\_\_\_\_ TRAILER # \_\_\_\_\_  
 UNDERLYING CARRIER (IF ANY) \_\_\_\_\_

SHIPPER CONSIGNER \_\_\_\_\_  
 STREET OR BOX \_\_\_\_\_ STREET OR BOX \_\_\_\_\_  
 CITY /STATE /ZIP \_\_\_\_\_ CITY /STATE /ZIP \_\_\_\_\_

NAME AND ADDRESS OF DEBTOR  OTHER THAN CONSIGNOR  
TRAC

PT. OF ORIGIN MOODY'S  
 PT. OF DESTINATION McNeil + Lemon St

BEG. ODOMETER	ENDING ODOMETER	TOTAL MILES	<input type="checkbox"/> HOURLY	RATE	JOB NO.	P.O. NO.
352498	352654	156	<input type="checkbox"/> TONNAGE		25-033	

TAG NO.	WEIGHT	COMMODITY	LOADING		UNLOADING		STANDBY TIME	BREAKDOWN / REASON FOR DELAY
			ARRIVE	DEPART	ARRIVE	DEPART		
154498	16.03	BASE	7:00	7:19	7:34	8:10		
1225	O'Side Blvd	Dirt			8:24	8:28		
		Dirt			8:39	8:58		
		Dirt			9:09	9:13		
		Dirt			9:23	9:49		
		Dirt			10:00	10:04		
154523	15.98	BASE	10:18	10:35	10:49	11:22		
		Dirt			11:33	11:37		
		Dirt			11:47	12:06		
		Dirt			12:17	12:22		
		Dirt			12:32	12:51		
154553	15.98	BASE	1:18	1:28	1:44	1:46		

5:45am to 3:15pm  
 2pm - 9 Loads

- TYPE OF DUMP TRUCK EQUIPMENT
- SUPER DUMP TRUCK
  - 2 AXLE
  - 3 AXLE
  - TRACTOR
  - 2 AXLE
  - 3 AXLE
  - TRAILER(S)
  - BOTTOM DUMP DBL
  - TRANSFER
  - END DUMP SEMI

REPORTING TIME <u>7AM</u>	ENDING TIME <u>2PM</u>	TOTAL TIME <u>9 1/2 HRS</u>	NET TIME <u>7 HRS</u>
START DRIVING TIME LAST TRIP	ARRIVAL TIME AT DUMP LAST TRIP	DEDUCTIBLE TIME	FUEL SURCHARGE
END UNLOADING LAST TRIP	PLANNING TIME LAST TRIP	NET TIME	TOTAL CHARGES

CARRIER Taza J. GAOA  
 DRIVER SIGNATURE \_\_\_\_\_  
 CONSIGNEE SIGNATURE \_\_\_\_\_

TERMS: A SERVICE CHARGE OF 1% WILL BE ASSESSED TO ALL ACCOUNTS PAST DUE 30 DAYS AS PERMITTED BY LAW. COURT COSTS, ATTORNEY FEES, AND ALL COSTS THAT ARISE FROM ANY PROCEEDINGS FOR THE COLLECTION OF AMOUNTS DUE TO THE ABOVE CARRIER FOR WORK DONE FOR THE ABOVE CUSTOMER WILL BE PAID BY THE ABOVE CUSTOMER.  
 ATTENTION UNDERLYING CARRIERS: No payment will be made for TICKETS NOT COMPLETELY #604 out.  
 PUBLIC UTILITIES COMMISSION REQUIRES PAYMENT FOR THESE CHARGES NOT LATER THAN THE 25<sup>TH</sup> DAY OF THE MONTH FOLLOWING DATE OF THIS BILL.



# Freight Bill

15353 Olde Hwy 80 El Cajon, CA. 92021  
 Phone: 619-443-6193 Fax: 619-443-9364

SHIPPER:

DATE	INVOICE NUMBER
03/11/26	080894-01

-- San Diego CA

BILL TO:

RAC Construction & Engineering  
 rclaudio@racconstruction.biz  
 5811 Barbarossa Ct  
 San Diego, CA 92115

CONSIGNEE:

-- Oceanside CA

Due On Receipt

QUANTITY	DESCRIPTION	WEIGHT	RATE	AMOUNT
7.25	PER HOUR		140.00	1015.00
B/L # 512630 Unit# Drivr Shipd 03/10/26 Pickup#			TOTAL USD	1015.00
Trailer# Delivered 03/10/26			THANK YOU	
P.O. # 25-033				

DIR # 100043651  
 E.P.A. ID. NO. CAR000187922  
 US DOT # 479041

# RUST & SONS TRUCKING

15353 Old Hwy 80 • El Cajon CA 92021  
 (619) 443-6193 • FAX (619) 443-9364

WEEK END PAY ROLL  
**FREIGHT BILL**  
 BOL# 512630

PRINCIPAL OR OVER-LYING CARRIER Rust & Sons DATE 3/10/26 INV. TRIP # 80894  
 ADDRESS \_\_\_\_\_ PAYROLL# 219430  
 CITY \_\_\_\_\_ ZIP \_\_\_\_\_ TRUCK # 153  
 STATE \_\_\_\_\_ TRAILER # \_\_\_\_\_  
 UNDERLYING CARRIER (IF ANY) \_\_\_\_\_

SHIPPER CONSIGNER RAC Const. CONSIGNEE \_\_\_\_\_  
 STREET OR BOX \_\_\_\_\_ STREET OR BOX \_\_\_\_\_  
 CITY /STATE /ZIP \_\_\_\_\_ CITY /STATE /ZIP \_\_\_\_\_

NAME AND ADDRESS OF DEBTOR IF OTHER THAN CONSIGNOR  
RAC Const  
 PT. OF ORIGIN 3210 Oceanside Blvd Oceanside 92056  
 PT. OF DESTINATION McNeil St & Lanon St Oceanside 92054

BEG. ODOMETER 393,990 ENDING ODOMETER 394,144 TOTAL MILES 154  HOURLY RATE \_\_\_\_\_ JOB NO. \_\_\_\_\_ P.O. NO. \_\_\_\_\_  
 TONNAGE

TAG NO.	WEIGHT	COMMODITY	LOADING		UNLOADING		STANDBY TIME	BREAKDOWN / REASON FOR DELAY
			ARRIVE	DEPART	ARRIVE	DEPART		
		Base	7:00	7:15	7:35	7:40		
		Dirt	7:40	7:57	8:17	8:22		
		Dirt	8:32	8:50	9:00	9:10		
		Dirt	9:20	9:37	9:50	9:52		
		Base	10:14	10:24	10:47	10:48		
		Dirt	10:40	10:55	11:19	11:22		
		Dirt	11:40	12:00	12:05	12:07		
		Dirt	12:20	12:33	12:44	12:47		
		Base	1:00	1:10	1:27	1:30		
		Dirt	1:30	1:50		2:15		

*10 Loads*

*(5:45 - to 3:45 pm)*

TYPE OF DUMP TRUCK EQUIPMENT  
 SUPER DUMP TRUCK  TRACTOR  TRAILER(S)  
 2 AXLE  2 AXLE  BOTTOM DUMP DBL  
 3 AXLE  3 AXLE  TRANSFER  
 END DUMP SEMI

REPORTING TIME <u>7:00am</u>	ENDING TIME <u>2:15pm</u>	TOTAL TIME <u>10</u>	TOTAL TONS
START DRIVING TIME LAST TRIP	ARRIVAL TIME AT DUMP LAST TRIP	DEDUCTIBLE TIME	FUEL SURCHARGE
END UNLOADING LAST TRIP	RUNNING TIME LAST TRIP <u>25m</u>	NET TIME <u>7hour 15min</u>	TOTAL CHARGES

TERMS: A SERVICE CHARGE OF 1 1/2% WILL BE ASSESSED TO ALL ACCOUNTS PAST DUE 30 DAYS AS PERMITTED BY LAW. COURT COSTS, ATTORNEY FEES, AND ALL COSTS THAT ARISE FROM ANY PROCEEDINGS FOR THE COLLECTION OF AMOUNTS DUE TO THE ABOVE CARRIER FOR WORK DONE FOR THE ABOVE CUSTOMER WILL BE PAID BY THE ABOVE CUSTOMER.  
 PUBLIC UTILITIES COMMISSION REQUIRES PAYMENT FOR THESE CHARGES NOT LATER THAN THE 25<sup>TH</sup> DAY OF THE MONTH FOLLOWING DATE OF THIS BILL.  
 ATTENTION UNDERLYING CARRIERS: No payment will be made for TICKETS NOT COMPLETELY filled out.

X CARRIER  
 X A C  
 DRIVER SIGNATURE  
 X [Signature]  
 CONSIGNEE SIGNATURE





WEIGHMASTER CERTIFICATE

154522

THIS IS TO CERTIFY that the following described commodity was weighed, measured, or counted by a weighmaster, whose signature is on this certificate, who is a recognized authority of accuracy, as prescribed by Chapter 7 (commencing with Section 12700) of Division 5 of the California Business and Professions Code, administered by the Division of Measurement Standards of the California Department of Food and Agriculture.

EL CORAZON RECLAMATION  
MOODY'S  
P.O. BOX 969  
BONSALL, CA 92003  
(760) 433-3316

Loaded at  
3210 Oceanside Blvd.  
Oceanside, CA 92056

MOODY'S  
3210 OCEANSIDE BLVD  
BONSALL, CA 92003  
760-631-0342

SALE

REF#: 0000001

Batch #: 073  
03/10/26

APPR CODE 11031  
ENCRYPTED BY ELAVON

Trace: 16  
AMEX  
\*\*\*\*\*2000

Manual C  
\*\*\*P

AMOUNT \$257.32  
SURCHARGE \$7.72  
TOTAL \$265.04

APPROVED

THANK YOU

CUSTOMER COPY

P.O. NO. \_\_\_\_\_

SOLD TO WAF Contractors JOB NO. 05-0223 DATE 03/10/26

ADDRESS Lincoln St LEAVE PLANTING 10:15

JOB LOCATION WAF Contractor ARRIVE JOB \_\_\_\_\_

C.O.D.	CHG.	TRK OWNER	TRK NO.	DRIVER	PLANT TK NO.	LEAVE JOB	AMOUNT
1							
2							
3							
4							
5							
6							

TONS/CUBIC YDS. \_\_\_\_\_ UNIT PRICE \_\_\_\_\_

1  D.G. FILL DIRT

2  BASE Class II Class III 15.00

3  SAND SE 50 SE 30

4  TOP SOIL

5  ROCK 3/8 1/2 3/4 1 1-1/2 3"

6  ENVIRONMENTAL FEE 5.00

GROSS TONS 28.41 TOTAL 228.10

TARE TONS 2.57 TAX 17.22

NET TONS 15.54 TOTAL AMOUNT 257.32

PREV TONS \_\_\_\_\_

TOTAL TONS \_\_\_\_\_

Responsibility and ownership of material belongs to consignee when loaded on truck

Moody's Outbound Material  
Moody's \_\_\_\_\_  
RESALE  YES  NO  
Deputy/Weighmaster \_\_\_\_\_

All bills due upon presentation unless otherwise arranged in advance. Open accounts subject to 1-1/2% monthly charge after 30 days unpaid balance.  
Not responsible for damage resulting from delivery made inside the curb or property line.





# Freight Bill

15353 Olde Hwy 80 El Cajon, CA. 92021  
 Phone: 619-443-6193 Fax: 619-443-9364

DATE	INVOICE NUMBER
03/13/26	081018-01

SHIPPER:

-- Oceanside CA

BILL TO:

RAC Construction & Engineering  
 rclaudio@racconstruction.biz  
 5811 Barbarossa Ct  
 San Diego, CA 92115

CONSIGNEE:

local -- San Diego CA

Due On Receipt

QUANTITY	DESCRIPTION	WEIGHT	RATE	AMOUNT
4	PER HOUR		140.00	560.00
B/L # 523699                      P.O. # 25-033 Unit#                              Trailer# Drivr Shipd 03/12/26    Delivered 03/12/26 Pickup#			TOTAL USD	560.00
				THANK YOU

MC # 19990  
 (619) 443-6193  
 FAX (619) 730-7051

# RUST LOGISTICS

"Trust in Rust"

15353 Old Hwy 80 • El Cajon CA 92021

WEEK END PAY ROLL  
**FREIGHT BILL**  
**BOL# 523699**

7:30 - 2:30 (7)

PRINCIPAL OR OVER-LYING CARRIER RUST LOGISTICS DATE 3-12-2020 TRIP # 81018  
 ADDRESS \_\_\_\_\_ CITY \_\_\_\_\_ STATE \_\_\_\_\_ ZIP \_\_\_\_\_ TRUCK # 219474  
 UNDERLYING CARRIER (IF ANY) \_\_\_\_\_ TRAILER # 202

SHIPPER CONSIGNER RUST 3 SONS CONSIGNEE RAC CONSTRUCTION  
 STREET OR BOX \_\_\_\_\_ STREET OR BOX \_\_\_\_\_  
 CITY/STATE/ZIP \_\_\_\_\_ CITY/STATE/ZIP \_\_\_\_\_  
 NAME AND ADDRESS OF DEBTOR IF OTHER THAN CONSIGNOR \_\_\_\_\_

PT. OF ORIGIN OCEANSIDE  
 PT. OF DESTINATION \_\_\_\_\_

BEG. ODOMETER 495467 ENDING ODOMETER 495600 TOTAL MILES 132  HOURLY  TONNAGE RATE \_\_\_\_\_ JOB NO. 25-033 P.O. NO. \_\_\_\_\_

TAG NO.	WEIGHT	COMMODITY	LOADING		UNLOADING		STANDBY TIME	BREAKDOWN / REASON FOR DELAY
			ARRIVE	DEPART	ARRIVE	DEPART		
		DIRT	9:30	9:45	9:55	10:10		
		DIRT	10:20	10:35	10:50	11:00		
		DIRT D	11:15	11:30	11:50	12:00		
		DIRT D	12:15	12:30	12:50	1:00		
			1:30					

TYPE OF DUMP TRUCK EQUIPMENT  
 SUPER DUMP TRUCK  TRACTOR  BOTTOM DUMP DBL  2 AXLE  3 AXLE  2 AXLE  3 AXLE  TRANSFER  END DUMP SEMI

TRAILER(S) \_\_\_\_\_

REPORTING TIME <u>9:30</u>	ENDING TIME <u>1:30</u>	TOTAL TIME <u>4</u>	TOTAL TONS
START DRIVING TIME LAST TRIP	ARRIVAL TIME AT DUMP LAST TRIP	DEDUCTIBLE TIME	FUEL SURCHARGE
END UNLOADING LAST TRIP	RUNNING TIME LAST TRIP	NET TIME	TOTAL CHARGES

X CARRIER  
 X DRIVER SIGNATURE [Signature]  
 X CONSIGNEE SIGNATURE [Signature]

TERMS: A SERVICE CHARGE OF 1 1/2% WILL BE ASSESSED TO ALL ACCOUNTS PAST DUE 30 DAYS AS PERMITTED BY LAW. COURT COSTS, ATTORNEY FEES, AND ALL COSTS THAT ARISE FROM ANY PROCEEDINGS FOR THE COLLECTION OF AMOUNTS DUE TO THE ABOVE CARRIER FOR WORK DONE FOR THE ABOVE CUSTOMER WILL BE PAID BY THE ABOVE CUSTOMER.  
 PUBLIC UTILITIES COMMISSION REQUIRES PAYMENT FOR THESE CHARGES NOT LATER THAN THE 25<sup>TH</sup> DAY OF THE MONTH FOLLOWING DATE OF THIS BILL.  
 ATTENTION UNDERLYING CARRIERS: No payment will be made for TICKETS NOT COMPLETELY filled out.

# CONSTRUCTION & DEMOLITION DIVERSION CERTIFICATE

RECEIVED AT: MOODY'S - EL CORAZON RECLAMATION

PROCESSED AT: 3210 OCEANSIDE BLVD., OCEANSIDE, CA

(760) 433-3316

P.O. MOODY'S JOB # 15-022 DATE 12-26  
 CASH CHECK CHARGE COMMERCIAL RESIDENCE TIME  
 NAME MAC CITY OF ORIGIN LA JOLLA

CITY OF ORIGIN

JOB LOCATION: LA JOLLA TONS 60 DIVERSION 100%  
 PU TRAILER FLATBED BOBTAIL 10-WHEEL END DUMP T & T  
 MATERIAL WOOD

LOAD COUNT	1	2	3	4	5	6	7	8	9	10

# LOADS 4 X PRICE 11,050 OTHER CHARGES \$ 2,800  
 TOTAL DUE \$ 13,850

SIGNATURE

TRUCK # 300

This certifies that the company above has utilized a recycling facility to divert construction demolition materials in accordance with LEED requirements. The diversion is based on an overall tonnage percentage of the respective facility.

MOODY'S is not responsible for damage to vehicle while being loaded or unloaded in yard.

JOB COPY

365279

MOODY'S  
 3210 OCEANSIDE BLVD  
 BONSALL, CA. 92003  
 760-631-0242

## SALE

Batch # 132 REF#: 00000014  
 03/12/28 12:51:48  
 APPR CODE 188328  
 ENCRYPTED BY ELAVON  
 Trace: 14 Manual CP  
 AMEX \*\*\*\*\*2000

AMOUNT \$2,800.00  
 SURCHARGE \$84.00  
 TOTAL \$2,884.00

APPROVED

THANK YOU

CUSTOMER COPY



# Freight Bill

15353 Olde Hwy 80 El Cajon, CA. 92021  
 Phone: 619-443-6193 Fax: 619-443-9364

DATE	INVOICE NUMBER
03/27/26	081597-01

SHIPPER:

-- Oceanside CA

BILL TO:

RAC Construction & Engineering  
 rclaudio@racconstruction.biz  
 5811 Barbarossa Ct  
 San Diego, CA 92115

CONSIGNEE:

local -- San Diego CA

Due On Receipt

QUANTITY	DESCRIPTION	WEIGHT	RATE	AMOUNT
7.5	PER HOUR		140.00	1050.00
B/L # 8976697                      P.O. # 25-033 Unit#                                      Trailer# Driver Shipd 03/26/26    Delivered 03/26/26 PickUp#			TOTAL USD	1050.00
THANK YOU				

NON-NEGOTIABLE BILL OF LADING AND TRANSPORTATION AGREEMENT

BILL NO.

PRINCIPAL CARRIER

West Logistics

DATE: 3-26-26  
 [Signature]

A-8976697  
 JOB # 25-033  
 BROKER #  
 TRUCK # 18  
 TRAILER #  
 CA# 340730

ADDRESS

PH

CITY/STATE/ZIP

UNDERLYING CARRIER (IF ANY)

Tibbess Truck

ADDRESS

PH

SHIPPER

R.A.C. Const.

RECEIVER

Moody's

ADDRESS

ADDRESS

CITY/STATE/ZIP

CITY/STATE/ZIP

POINT OF ORIGIN

POINT OF DESTINATION

McNeil St & Lewis St, Oceanside, CA 92054

EQUIPMENT TYPE

- SUPER TAG
- END DUMP
- FLAT BED
- 10-WHEELER
- TRANSFER
- SIDE DUMP
- MIXER
- SUPER-10
- DBL BOTTOMS
- TRUCK & PUP
- SWEEPER
- STRONG ARM
- SEMI-BOTTOM
- WATER TRUCK
- OTHER

HOURLY  TONNAGE  PER LOAD

RATE @ \$

TAG NO.	WEIGHT	COMMODITY	LOADING		UNLOADING		STANDBY TIME	BREAKDOWN OR REASON FOR DELAY
			ARRIVE	DEPART	ARRIVE	DEPART		
1 365612	—	DEMO	8:00	9:10	9:28	9:28	—	MOODY'S
2 155316	15 <sup>sq</sup>	BASE	9:32	9:46	10:10	10:12	—	MOODY'S
3 <del>155316</del>	—	DEMO	10:14	10:55	11:09	11:14	—	MOODY'S
4 155327	15 <sup>sq</sup>	BASE	11:14	11:32	11:51	12:03	—	MOODY'S
5 365612	—	DEMO	12:10	1:00	1:22	1:26	—	MOODY'S
6 155335	15 <sup>sq</sup>	BASE	1:28	1:36	2:20		—	MOODY'S
7								
8								
9								
10								
11								
12								
13								
14								
15								

LOADING TIME 8:00	UNLOADING TIME 3:30	TOTAL TIME 7:30	DEDUCTIBLE TIME \$	TOTAL TONS	ACCIDENTIAL/OTHER
START DUMPING TIME LAST TRIP	START DUMPING TIME LAST TRIP	END DUMPING TIME LAST TRIP	RUNNING TIME LAST TRIP	TOTAL CHARGES	

SUBJECT TO TERMS AND CONDITIONS ON REVERSE SIDE

DRIVER SIGNATURE: [Signature]  
 SHIPPER/RECEIVER (AGENT OR DEBITOR) SIGNATURE: [Signature]

TO REORDER THIS FORM  
 westrk.org/store

PRESS HARD - YOU ARE MAKING 5 COPIES

WSTA © 2021  
 REV. 05/21



CA #575790  
DIR #PW-LR-1000719594

# ENGLAND TRUCKING, LLC

10302 Vista Camino • Lakeside, CA 92040  
(619) 971-9196

END \_\_\_\_\_ ROLL \_\_\_\_\_  
**FREIGHT BILL**  
**№ 101090**

PRINCIPAL OR OVERLYING CARRIER Rust Log/RAC DATE 3/27/26

TRIP # 810666

ADDRESS \_\_\_\_\_  
CITY \_\_\_\_\_ STATE \_\_\_\_\_ ZIP \_\_\_\_\_

TRUCK # 100  
TRAILER # \_\_\_\_\_

UNDERLYING CARRIER IF ANY: England Trucking

SHIPPER CONSIGNOR \_\_\_\_\_ CONSIGNEE RAC

STREET OR BOX \_\_\_\_\_ STREET OR BOX \_\_\_\_\_

CITY/STATE/ZIP \_\_\_\_\_ CITY/STATE/ZIP \_\_\_\_\_

NAME AND ADDRESS OF DEBTOR IF OTHER THAN CONSIGNOR \_\_\_\_\_

PT. OF ORIGIN RAC  
PT. OF DESTINATION Mowbray's Ocean Side

McNeil St. & Lemon St. Ocean Side  
BEG. ODOMETER 52147 ENDING ODOMETER 52260 TOTAL MILES 113 HOURLY TONNAGE  RATE \_\_\_\_\_ JOB NO. 25033 RO. NO. \_\_\_\_\_

TAG NO.	WEIGHT	COMMODITY	LOADING		UNLOADING		STANDBY TIME	BREAKDOWN / REASON FOR DELAY
			ARRIVE	DEPART	ARRIVE	DEPART		
<u>155369</u>		<u>Base</u>	<u>8:45</u>	<u>8:55</u>	<u>9:15</u>	<u>9:20</u>		
<u>155371</u>		<u>"</u>	<u>9:45</u>	<u>9:55</u>	<u>10:15</u>	<u>10:20</u>		
<u>155378</u>		<u>"</u>	<u>9:40</u>	<u>9:45</u>	<u>11:10</u>	<u>11:20</u>		
		<u>demo</u>	<u>11:30</u>	<u>11:45</u>	<u>12:00</u>	<u>12:05</u>		
<u>155396</u>	<u>8 tons</u>	<u>Base</u>	<u>12:05</u>	<u>12:20</u>	<u>12:40</u>	<u>12:45</u>		

TYPE OF DUMP TRUCK EQUIPMENT  
 SUPER DUMP TRUCK  
 2 AXLE  
 3 AXLE  
 TRAILER(S)  
 TRACTOR  
 BOTTOM DUMP DBL  
 TRANSFER  
 END DUMP SEMI

REPORTING TIME <u>8:45</u>	ENDING TIME <u>1:00</u>	TOTAL TIME <u>5.0</u>	TOTAL TONS
START DRIVING TIME LAST TRIP <u>12:20</u>	ARRIVAL TIME AT DUMP LAST TRIP <u>12:40</u>	DEDUCTIBLE TIME <u>0</u>	FUEL SURCHARGE
END UNLOADING LAST TRIP <u>12:45</u>	FINISHING TIME LAST TRIP <u>1.0</u>	NET TIME <u>5.0</u>	TOTAL CHARGES

X CARRIER  
 DRIVER SIGNATURE [Signature]  
 CONSIGNEE SIGNATURE Minuel Chaves

TERMS. A SERVICE CHARGE OF 1% WILL BE ASSESSED TO ALL ACCOUNTS PAST DUE 30 DAYS AS PERMITTED BY LAW COURT COSTS ATTORNEY FEES, AND ALL COSTS THAT ARISE FROM ANY PROCEEDINGS FOR THE COLLECTION OF AMOUNTS DUE TO THE ABOVE CARRIER FOR WORK DONE FOR THE ABOVE CUSTOMER MUST BE PAID BY THE ABOVE CUSTOMER. ATTENTION UNDERLYING CARRIERS NO payment will be made for TICKETS NOT COMPLETELY filled out

PUBLIC UTILITIES COMMISSION  
 REQUIRES PAYMENT FOR THESE CHARGES NOT LATER THAN THE 25th DAY OF THE MONTH FOLLOWING DATE OF THIS BILL.

inibaque